

Registered Nurse 12 month Perioperative Program **GradStart 2024**

Come and experience nursing at the heart of Vibrant Sydney



ABOUT US

Sydney Hospital/Sydney Eye Hospital(SSEH) is located on the site of Australia's first Hospital. We are committed to ensuring our First Year Transitioning to Professional Practice Registered Nurses are supported and nurtured throughout their transition program to ensure a smooth and enjoyable start to their career.

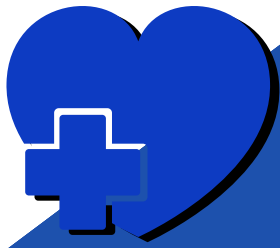


Sydney Hospital/Sydney Eye Hospital provides general and specialist health care to the public and community including :

- 24 hour Emergency Care Services
- General Medicine including a close observation unit
- Perioperative services including Scrub Scout, Anaesthetics, Post Anesthetics Care Unit (PACU- Recovery)
- Day Surgery
- Specialist hand and eye surgery and related outpatient services

Sydney Hospital's dedicated hand unit is a center of excellence and tertiary referral center for hand trauma and conditions of the hand.

SSEH is a center of excellence and quaternary referral center for eye health conditions. It performs a vast amount of public eye surgery and provides emergency eye care, ophthalmic health services for inpatient/outpatient and community programs.



Perioperative Stream

Registered Nurse 12 month Program

GradStart 2024

WHY JOIN US

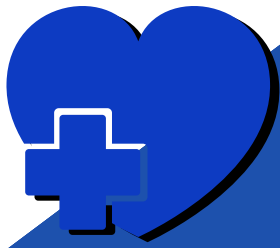
Our 12 month Transition to Professional Practice Perioperative stream for Registered Nurses provides you with an opportunity to undertake two rotations in a variety of units/departments.



Clinical experience opportunities:



- Scrub Scout
- Anaesthetics
- Post Anaesthetics Care Unit (PACU) - Recovery
- Day Procedure Unit/23 hour ward



Registered Nurse 12 month Program **GradStart 2024**

WHY JOIN US

Our Program offers:

- Nursing experience in major teaching hospital in the heart of Sydney
- Two Clinical placement rotations from a variety of clinical units over 12 month period
- Five day corporate and nursing orientation program
- Support and guidance from preceptors, CNE, CNC, NE and NUMs
- Close group clinical supervision and reflective practice session
- First year Transitioning Nurse tailored Education
- Employment and ongoing professional development opportunities on completion of the program
- Annual leave
- Employee Assistance Program
- Smart Salary
- Fitness passport
- NSW Health State wide uniforms



For more information

Please contact



Lynette.Higgs@health.nsw.gov.au or
Mary.SouSou@health.nsw.gov.au



(+61) (02) 9382 7412



Sydney Hospital/ Sydney Eye Hospital
8 Macquarie Street Sydney