



Key messages for local services

New cases: In the 7 days to August 25 there were **256** new COVID-19 cases notified in SESLHD residents which is similar to the previous week. Notifications were predominantly in adults, with the highest proportion in those aged 40-49 years. COVID-19 hospital presentations and admissions increased this week but remain low.

Influenza notifications decreased by 6% this week with **277** notifications, the highest numbers being amongst children and teenagers. Presentations to ED for influenza-like illness (ILI) decreased and are lower than usual for this time of year. Admissions for pneumonia and ILI and presentations for bronchiolitis remain steady.

Deaths: There were 0 deaths among people with COVID-19 reported in the past week. The total number of deaths among people with COVID-19 in SESLHD is 897.

Aged & Disabled Care Facilities: The number of aged care facilities under surveillance for COVID-19 increased this week, with 4 facilities experiencing an outbreak. There is 1 outbreak due to RSV this week. There is 1 disability service with a recent COVID-19 exposure.

Testing: Just under half of notifications this week were via PCR (48%). The estimated COVID-19 positivity rate* for the week ending 27 August is 2.8% (+0.3%).

Influenza positivity was 4.3% (-0.8%). Influenza B remains the predominant strain detected (60%).

* SESLHD SARS-CoV-2 PCR positivity is based on SEALS testing data that mainly reflects patients presenting to District hospitals, including SCH.

Data summary

1. Case numbers

Table 1: SESLHD COVID PCR and RAT positive cases by LGA of residence and notification week

LGA	7 days	14 days	28 days	Total (Since 03/2020)	7-day crude rate per 100,000*	Total crude rate per 100,000*
Bayside	36	60	118	80,431	18.1	40,429.2
Georges River	43	75	128	75,319	26.6	46,631.4
Randwick	38	80	170	78,087	24.7	50,714.7
Sutherland Shire	98	176	312	121,661	41	50,856.9
Sydney	12	30	70	36,655	15.2	46,420.7
Waverley	8	23	52	35,041	10.9	47,802.3
Woollahra	21	35	59	25,399	36.6	44,278.4
SESLHD	256	479	909	452,593	26.4	46,641.3

Table 2: SESLHD influenza positive cases by LGA of residence and notification week

LGA	7 days	14 days	28 days	Total for 2023 YTD	7-day crude rate per 100,000*	2023 total crude rate per 100,000*
Bayside	46	84	187	1,275	23.1	640.9
Georges River	37	83	192	1,078	22.9	667.4
Randwick	32	78	161	1,039	20.8	674.8
Sutherland Shire	95	186	340	1,844	39.7	770.8
Sydney	15	27	59	377	19	477.4
Waverley	30	71	131	649	40.9	885.4
Woollahra	22	46	101	533	38.4	929.2
SESLHD	277	575	1,171	6,795	28.5	700.6

*based on DPIE LGA projection data 2021.

Figure 1: SESLHD COVID-19 cases by test type, week of notification and year, week ending 25 August 2023

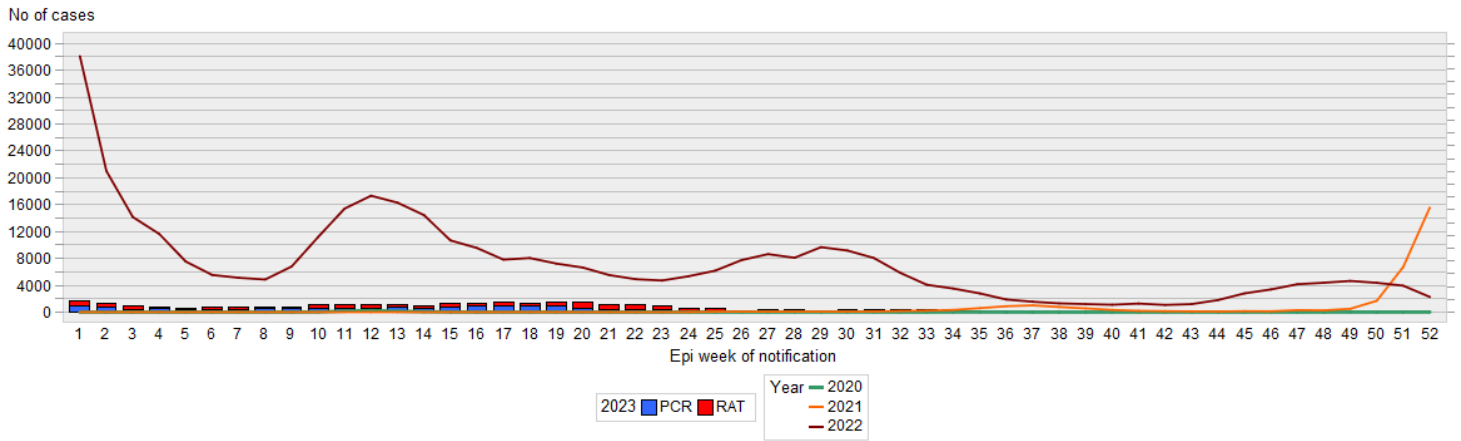


Figure 2: SESLHD influenza cases by week of notification and year, week ending 25 August 2023

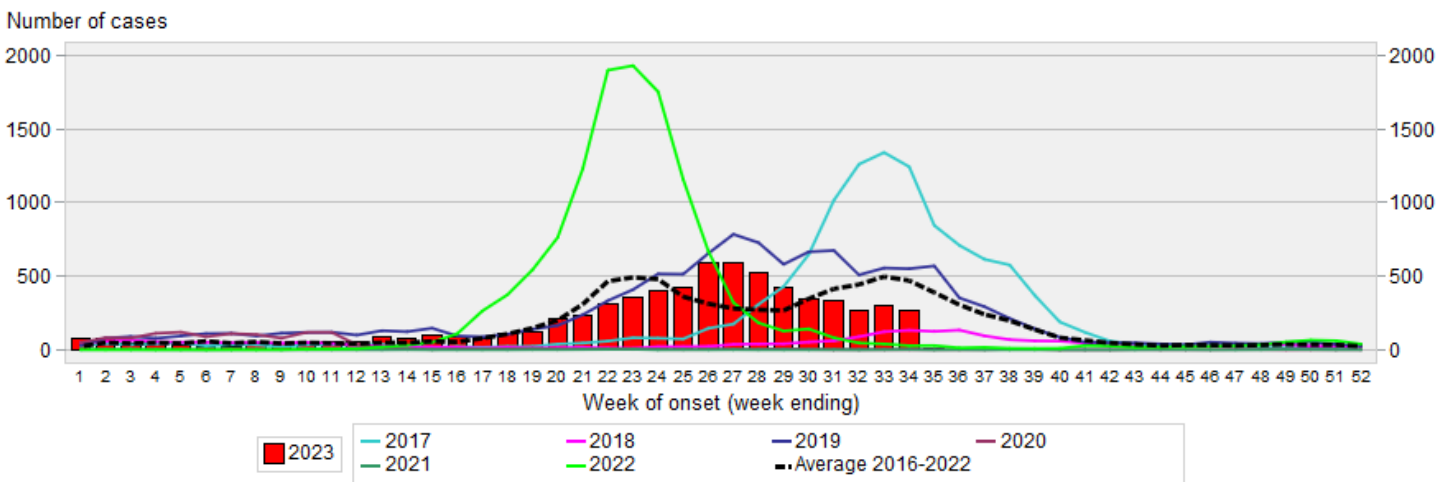
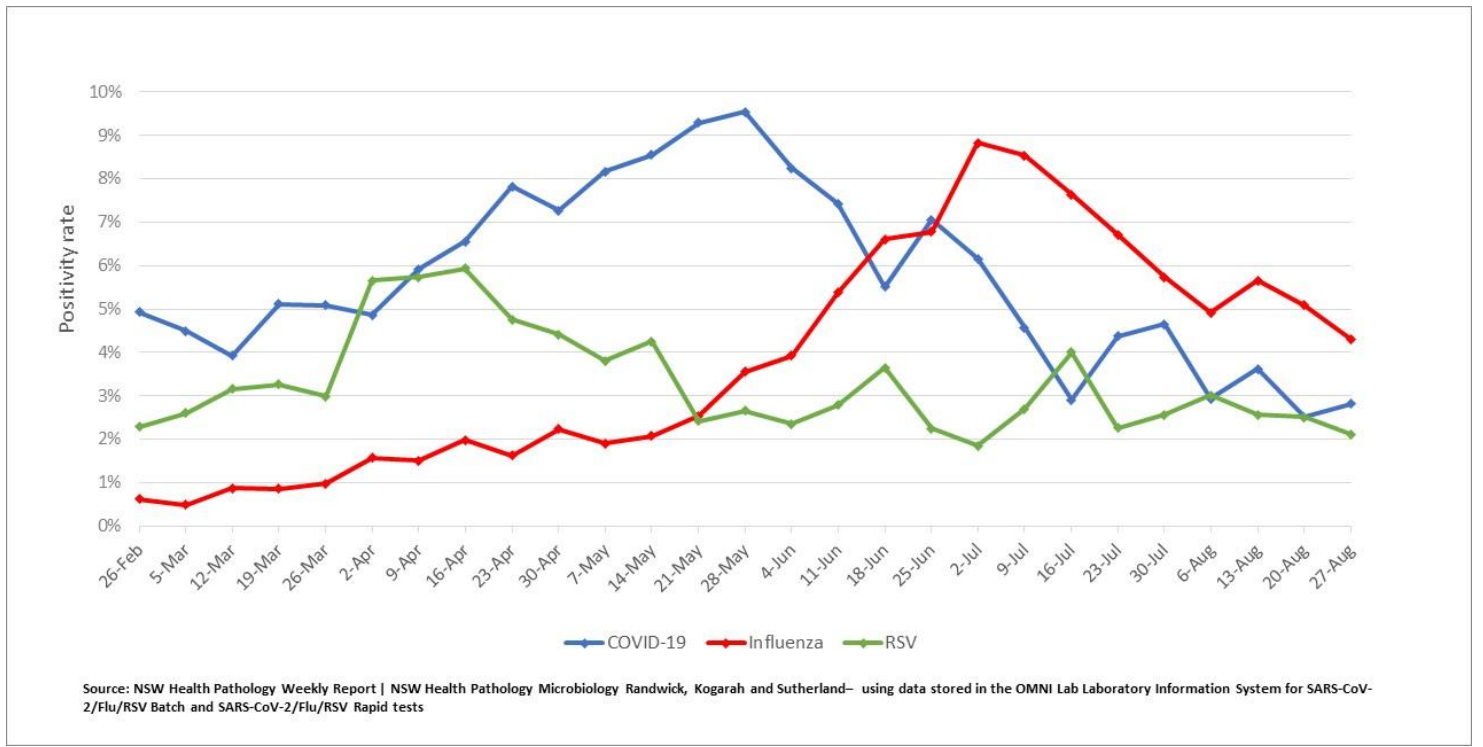
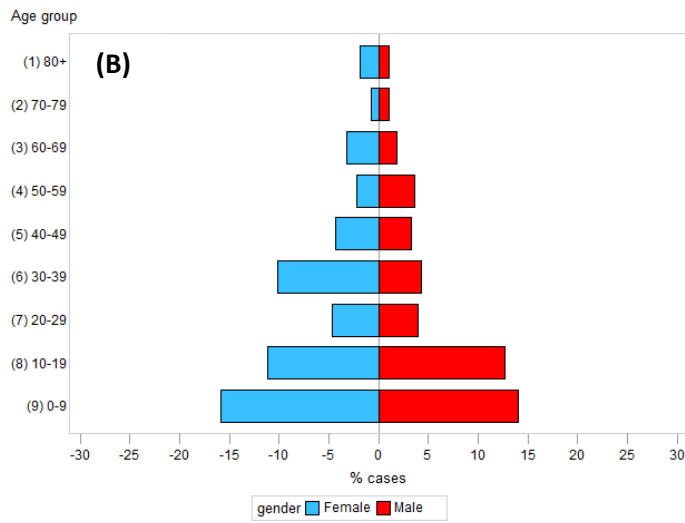
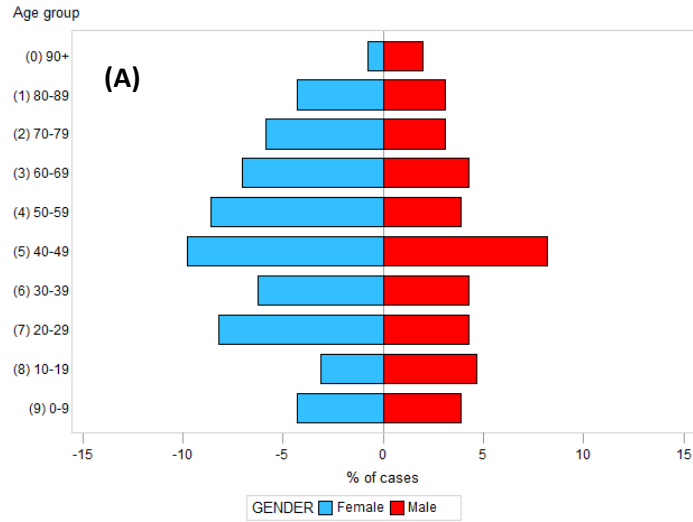


Figure 3: SEALS respiratory test positivity rate by week, week ending 27 August 2023



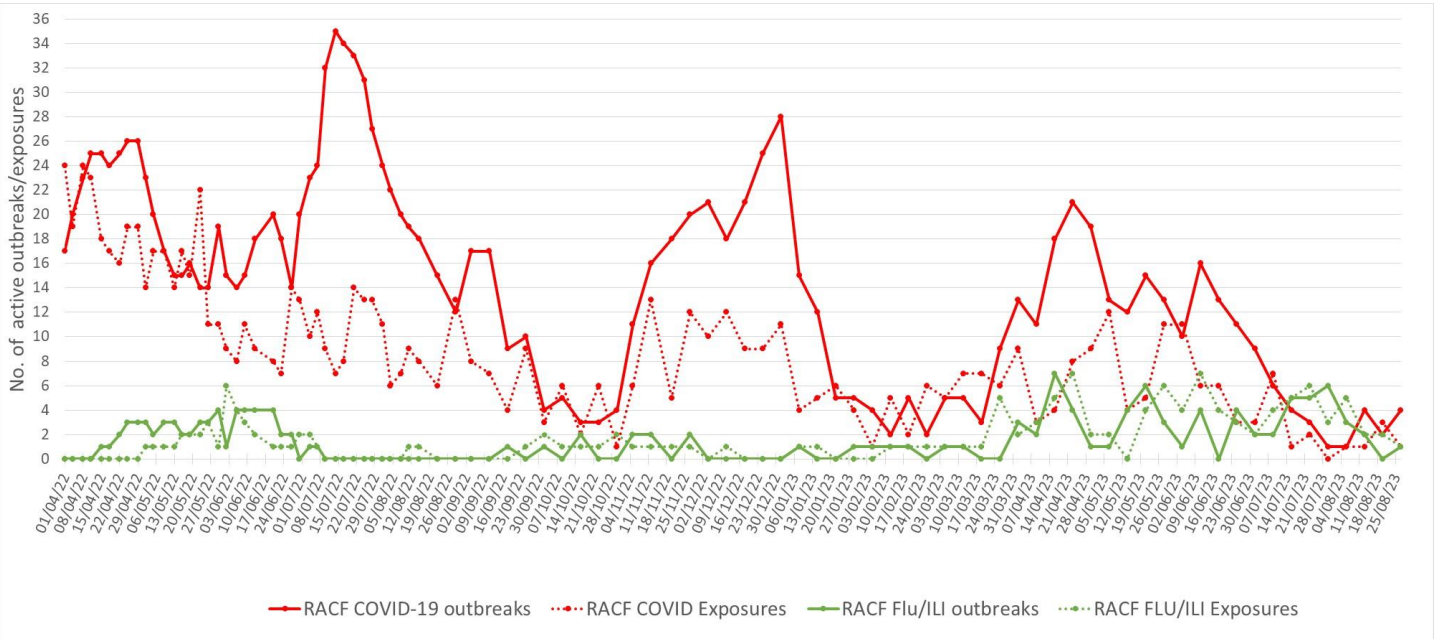
2. Demographic Data

Figure 4: Percentage of (A) COVID and (B) influenza cases in the last 7 days by age group and gender, to 25 August 2023



3. Residential facility outbreaks reported to the Public Health Unit

Figure 5: SESLHD aged care facility & disability COVID and Flu/ILI exposures and outbreaks, 1 April 2022 to 27 August 2023



NB. 'Flu/ILI' outbreaks include outbreaks caused by RSV and other respiratory viruses

4. Emergency department presentations and admissions

Table 3: Emergency Department presentations within SESLHD week ending 27 August 2023

Diagnosis / Category	Trend since last week	Compared to average for time of year (2018-2022)	Comment
Respiratory, fever and unspecified infection presentations	Steady	Similar	
Influenza like illness (ILI) presentations	Decreased	Below	0.6x lower than last week 0.8x lower than usual
COVID-19/coronaviruses presentations	Increased	N/A	1.6x higher than last week
Bronchiolitis presentations	Steady	Similar	

Data is from NSW Public Health Rapid Emergency Department Surveillance System. Increase or decrease indicates change >20% compared to the previous week.

Figure 6: Presentations to ED due to influenza like illness

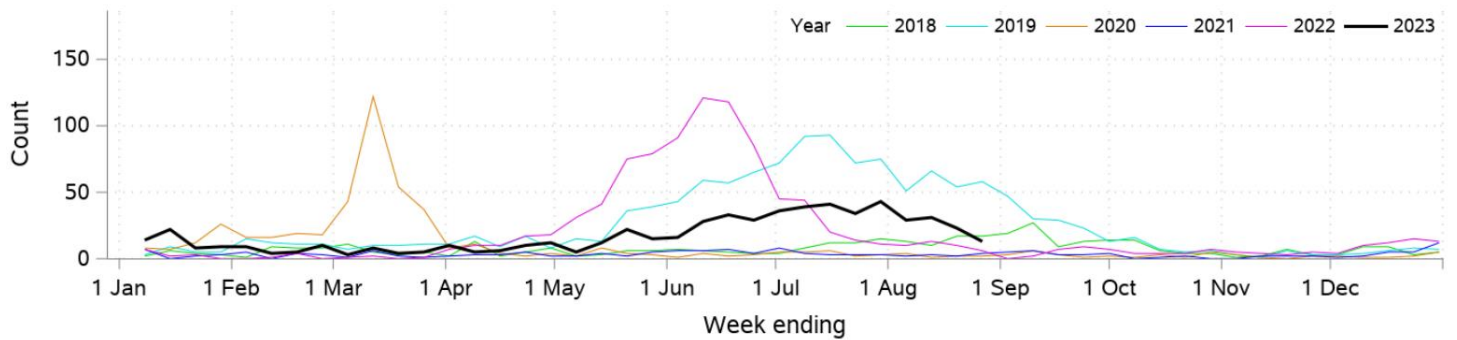


Figure 7: Presentations to ED due to COVID-19/coronaviruses

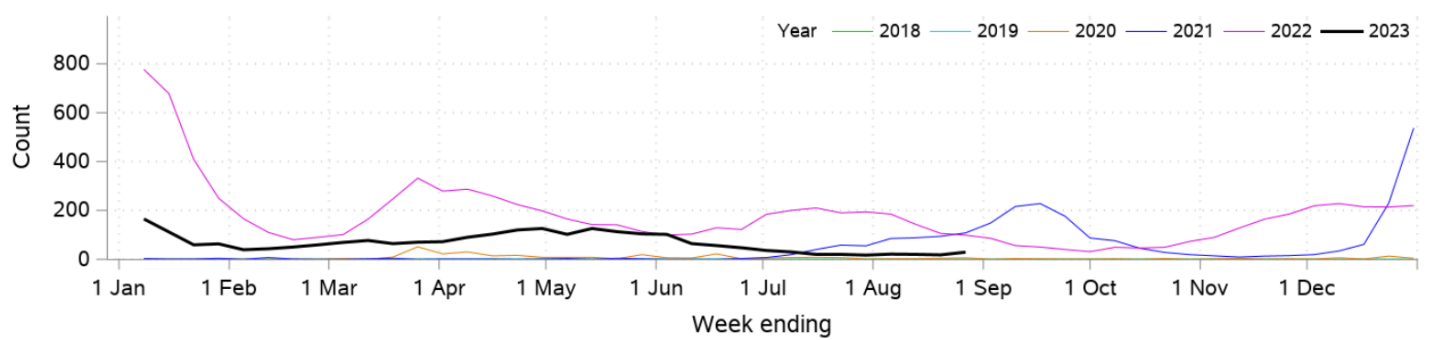


Figure 8: COVID-19/coronaviruses hospital admissions

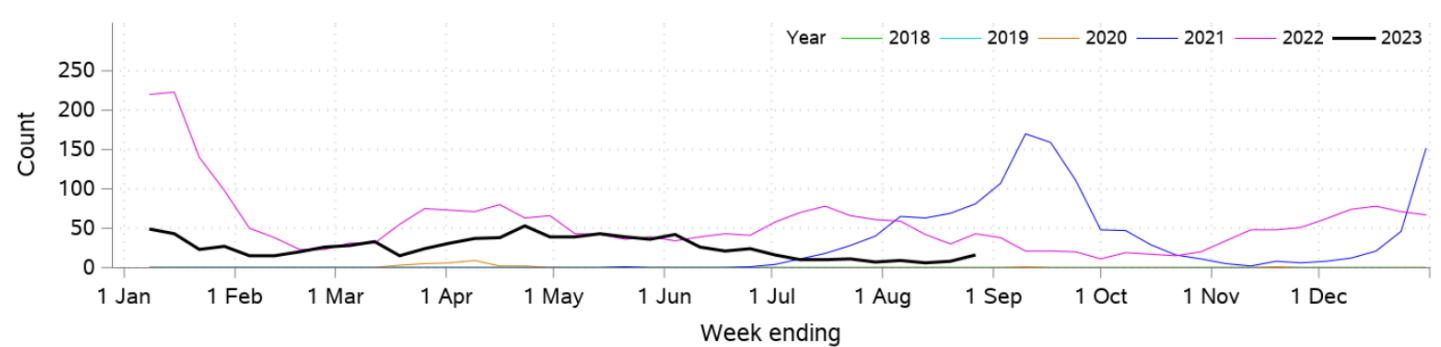


Figure 9: Pneumonia and ILI hospital admissions

