



**Key messages for local services**

**New cases:** In the 7 days to August 4 there were **231** new COVID-19 cases notified in SESLHD residents which is an 11% increase compared to last week. Notifications were predominantly in adults aged 30- 59 years. COVID-19 hospital presentations and admissions remain low and steady.

Influenza notifications decreased 8% this week with **325** notifications, with the highest numbers seen amongst children. Presentations to ED for influenza-like illness (ILI) decreased this week but remain higher than usual for this time of year. Admissions for pneumonia and ILI decreased, and presentations for bronchiolitis remain steady.

**Deaths:** There has been one death among people with COVID-19 reported in the past week. The total number of deaths among people with COVID-19 in SESLHD is 892.

**Aged & Disabled Care Facilities:** The number of aged care facilities under surveillance for COVID-19 remains steady, and only 1 facility is experiencing an outbreak. There is one outbreak due to rhinovirus and one due to RSV. There are no disability services with a recent COVID-19 or influenza exposure.

**Testing:** Half of notifications this week were via PCR (50%). The estimated COVID-19 positivity rate\* for the week ending 6 August is 2.9% (-1.5%). ICPMR COVID-19 sequencing reports have moved to fortnightly, so there is no update on circulating variants from last week, when recombinant lineages of XBB predominated.

Influenza positivity was 4.9% (-1%). Influenza A was the predominant strain detected (53.7%).

\* SESLHD SARS-CoV-2 PCR positivity is based on SEALS testing data that mainly reflects patients presenting to District hospitals, including SCH.

**Data summary**

**1. Case numbers**

**Table 1: SESLHD COVID PCR and RAT positive cases by LGA of residence and notification week**

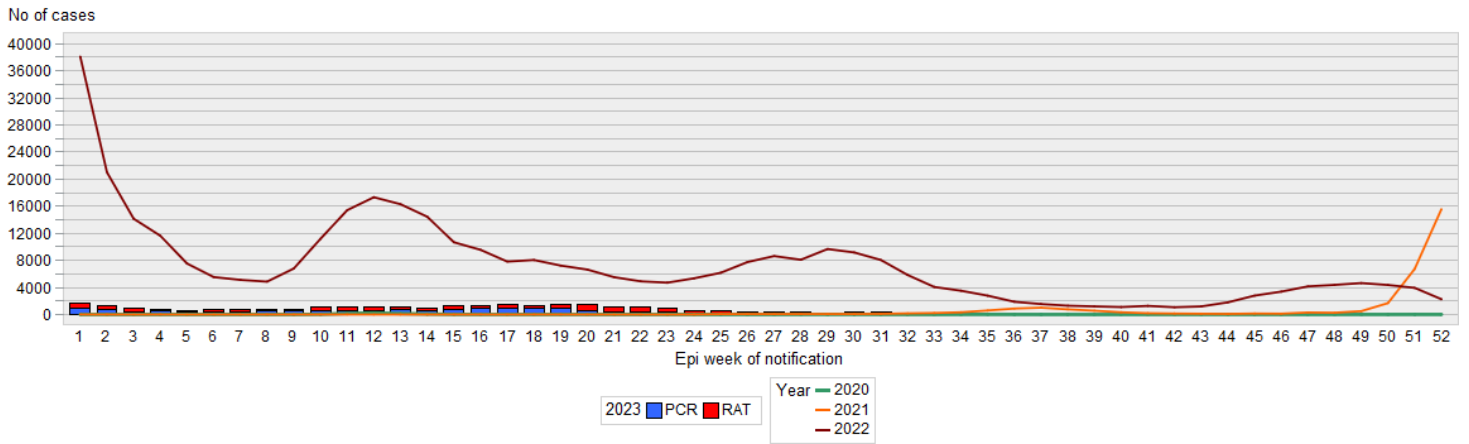
LGA	7 days	14 days	28 days	Total (Since 03/2020)	7-day crude rate per 100,000*	Total crude rate per 100,000*
Bayside	34	63	119	80,347	17.1	40,387
Georges River	23	48	117	75,214	14.2	46,566
Randwick	51	76	171	77,969	33.1	50,638
Sutherland Shire	75	137	272	121,424	31.4	50,758
Sydney	23	32	75	36,608	29.1	46,361
Waverley	13	30	62	35,002	17.7	47,749
Woollahra	12	22	46	25,352	20.9	44,197
<b>SESLHD</b>	<b>231</b>	<b>408</b>	<b>862</b>	<b>451,916</b>	<b>23.8</b>	<b>46,572</b>

**Table 2: SESLHD influenza positive cases by LGA of residence and notification week**

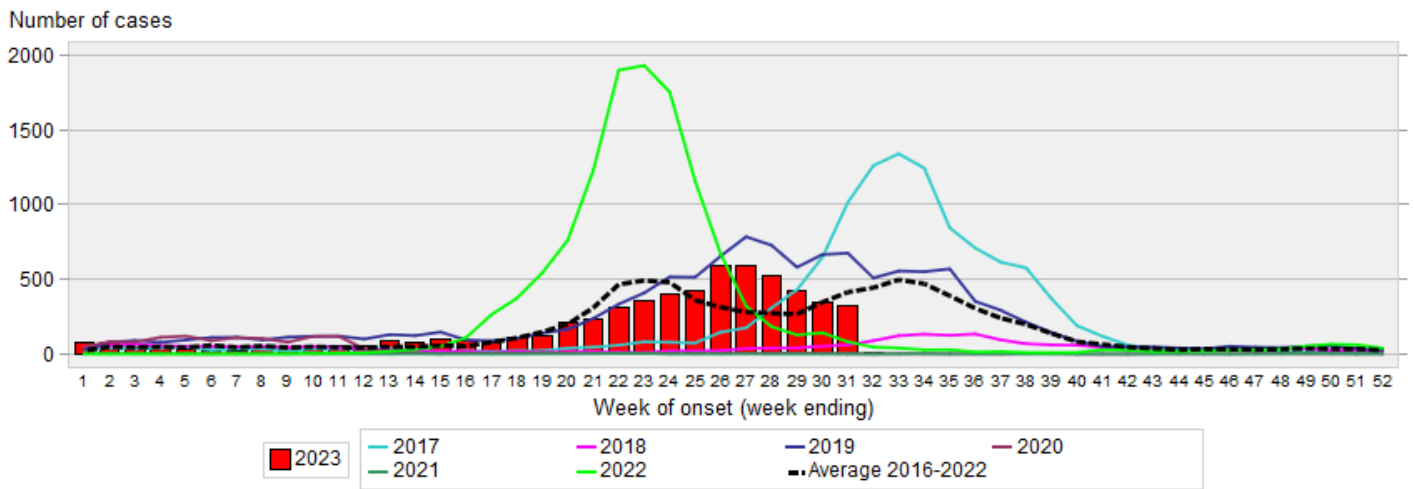
LGA	7 days	14 days	28 days	Total for 2023 YTD	7 day crude rate per 100,000*	2023 total crude rate per 100,000*
Bayside	58	124	330	1,146	29.2	576
Georges River	55	103	231	940	34.1	582
Randwick	46	109	227	924	29.9	600
Sutherland Shire	76	167	478	1,580	31.8	661
Sydney	24	48	120	342	30.4	433
Waverley	31	58	117	549	42.3	749
Woollahra	35	61	111	467	61	814
<b>SESLHD</b>	<b>325</b>	<b>670</b>	<b>1,614</b>	<b>5,948</b>	<b>33.5</b>	<b>613</b>

\*based on DPIE LGA projection data 2021.

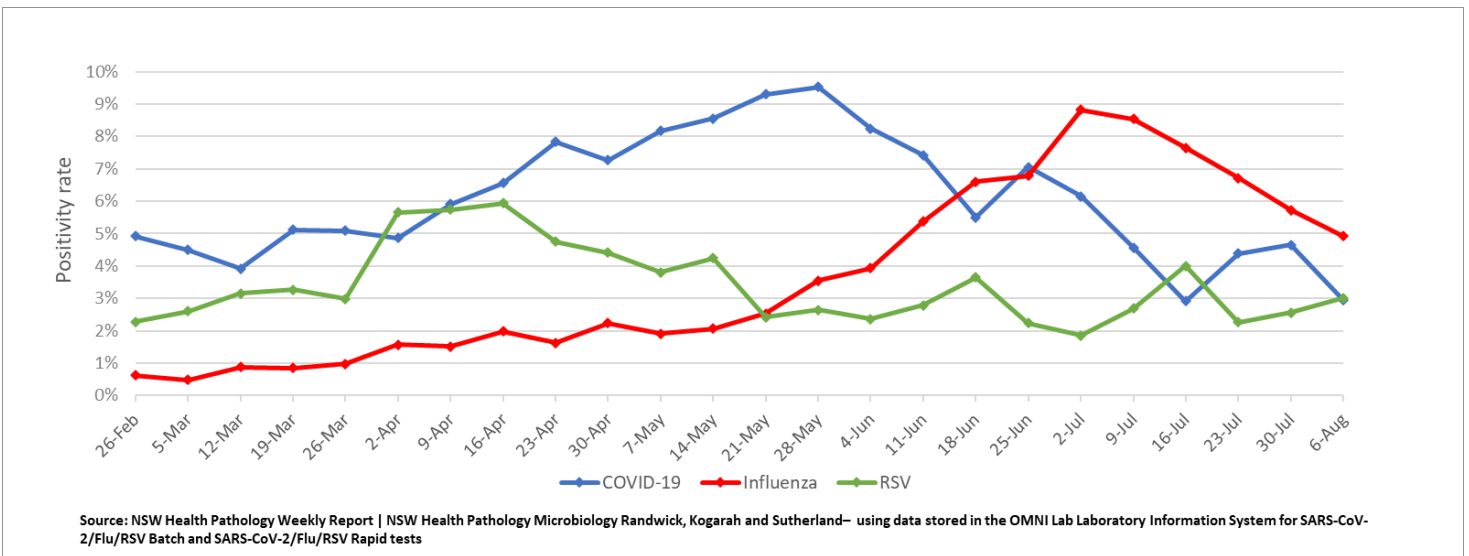
**Figure 1: SESLHD COVID-19 cases by test type, week of notification and year, week ending 4 August 2023**



**Figure 2: SESLHD influenza cases by week of notification and year, week ending 4 August 2023**

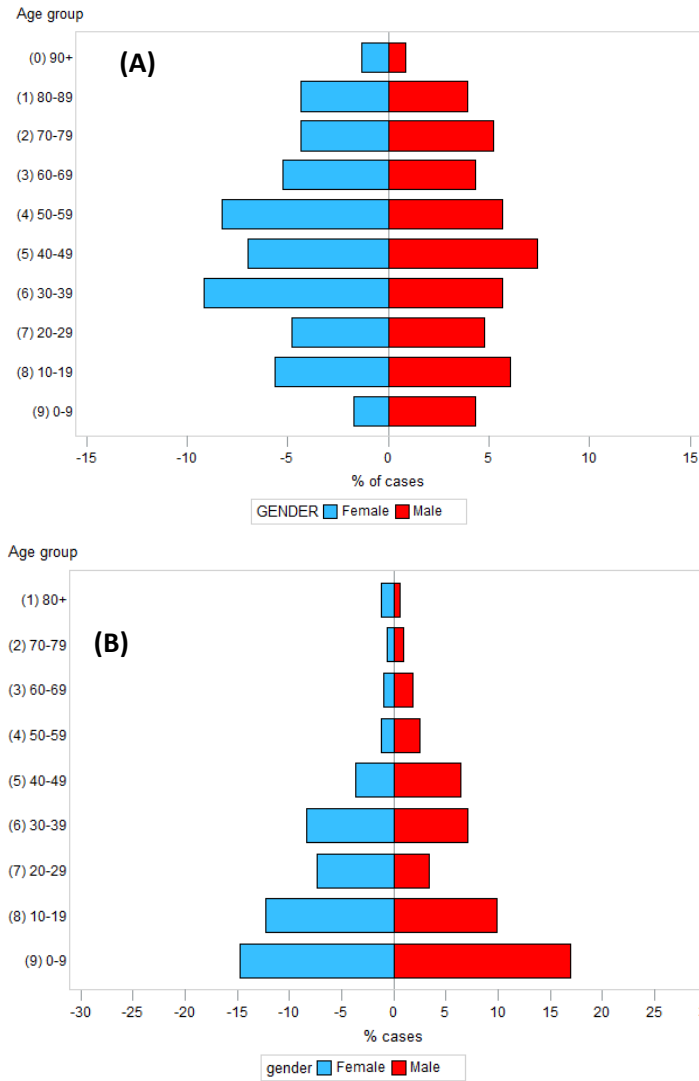


**Figure 3: SEALS respiratory test positivity rate by week, week ending 6 August 2023**



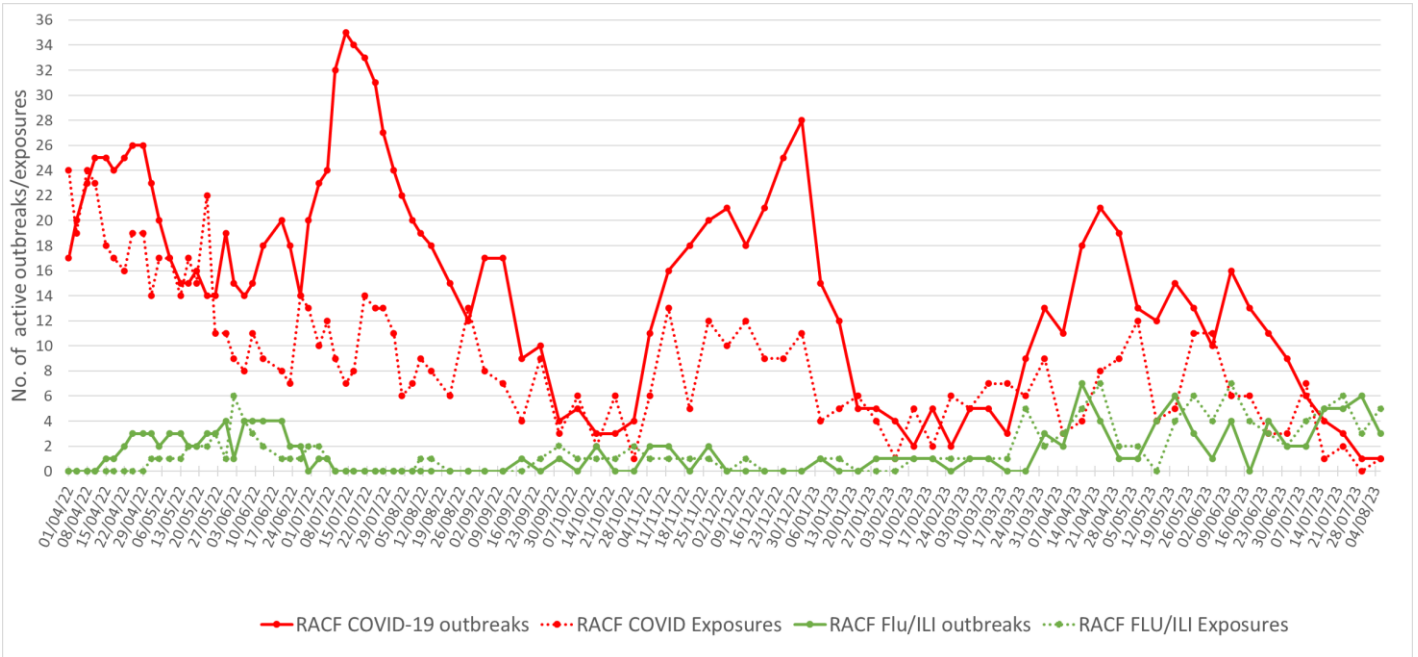
## 2. Demographic Data

Figure 4: Percentage of (A) COVID and (B) influenza cases in the last 7 days by age group and gender, to 4 August 2023



## 3. Residential facility outbreaks reported to the Public Health Unit

Figure 5: SESLHD aged care facility & disability COVID and Flu/ILI exposures and outbreaks, 1 April 2022 to 6 August 2023



NB. 'Flu/ILI' outbreaks include outbreaks caused by RSV and other respiratory viruses

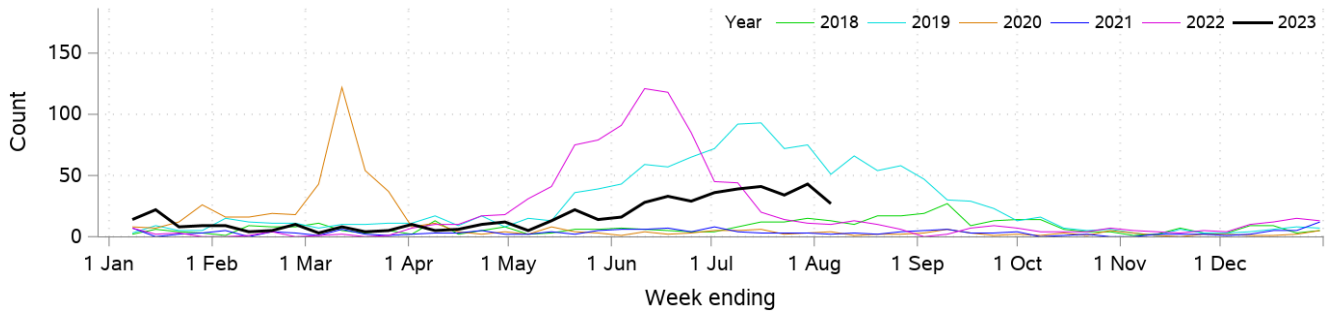
#### 4. Emergency department presentations and admissions

**Table 3: Emergency Department presentations within SESLHD week ending 6 August 2023**

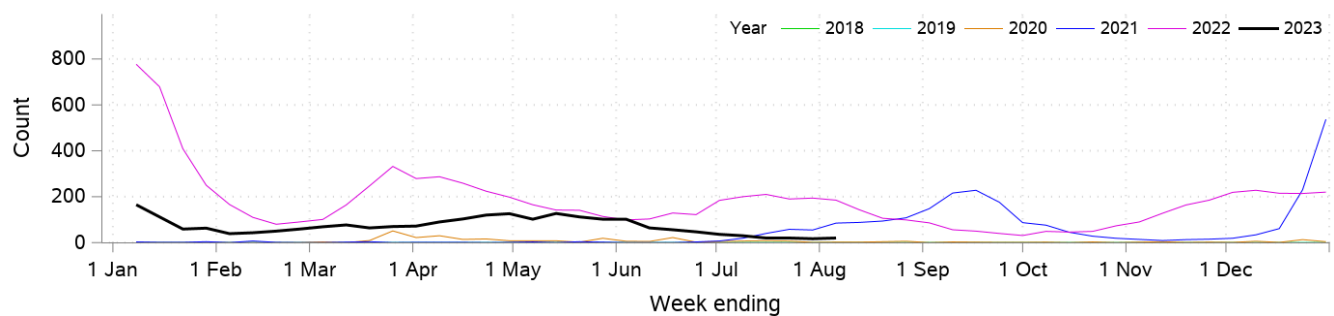
Diagnosis / Category	Trend since last week	Compared to average for time of year (2018-2022)	Comment
Respiratory, fever and unspecified infection presentations	Steady	Similar	
Influenza like illness (ILI) presentations	Decreased	Higher	0.6x lower than last week 1.7x higher than usual
Coronaviruses/SARS presentations	Steady	N/A	
Bronchiolitis presentations	Steady	Similar	

Data is from NSW Public Health Rapid Emergency Department Surveillance System. Increase or decrease indicates change >20% compared to the previous week

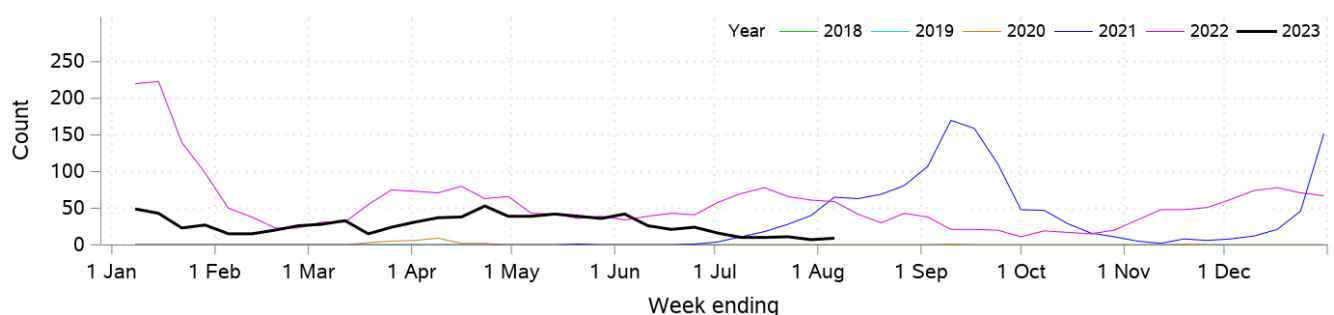
**Figure 6: Presentations to ED due to influenza like illness**



**Figure 7: Presentations to ED due to coronaviruses/SARS**



**Figure 8: Coronaviruses/SARS hospital admissions**



**Figure 9: Pneumonia and ILI hospital admissions**

