



**Key messages for local services**

**COVID-19**

Overall indicators of COVID-19 activity during December were higher than in November and increased at the end of December. Laboratory notifications were 14% higher than in November and were predominantly from older age groups. The positivity rate of PCR tests increased during the month and averaged about 9.1% compared to 8.1% in November. Aged care outbreaks peaked at the end of December and have decreased in the first week of January.

**Influenza**

Influenza case notifications slightly increased at the start of December before decreasing, and overall remained at low-moderate levels, slightly above the usual inter-seasonal baseline. Case notifications are predominantly from young people. Influenza A remains the predominant influenza strain detected. Influenza test positivity fluctuated during December, but the average was similar to November at 3.6%. ED presentations for influenza-like illness remain stable but above average for this time of year. Pneumonia and ILI admissions increased though may include activity due to other pathogens.

**Respiratory syncytial virus**

RSV PCR positivity was stable and low, as were bronchiolitis ED presentations which were within the usual range for this time of year.

**Data summary**

**1. Case numbers**

**Table 1: SESLHD COVID PCR and RAT positive cases by LGA of residence, Dec 2023**

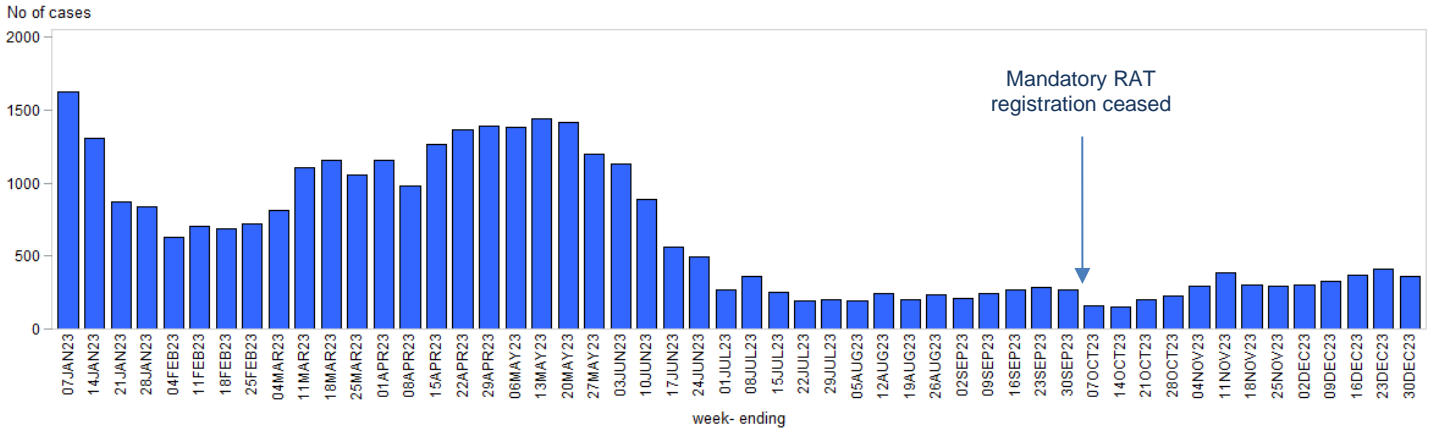
LGA	December count	December rate per 100,000*	2023 count	2023 crude rate per 100,000*
Bayside	285	161.7	6,323	3,587.9
Georges River	224	146.6	6,042	3,954.2
Randwick	233	172.3	5,562	4,113.3
Sutherland Shire	397	171.9	9,132	3,953.3
Sydney	116	162.1	2,415	3,374.4
Waverley	158	227.7	2,033	2,929.5
Woollahra	137	254.1	1,758	3,261.0
<b>SESLHD</b>	<b>1,550</b>	<b>174.5</b>	<b>33,265</b>	<b>3745.8</b>

**Table 2: SESLHD influenza positive cases by LGA of residence and notification week, Dec 2023**

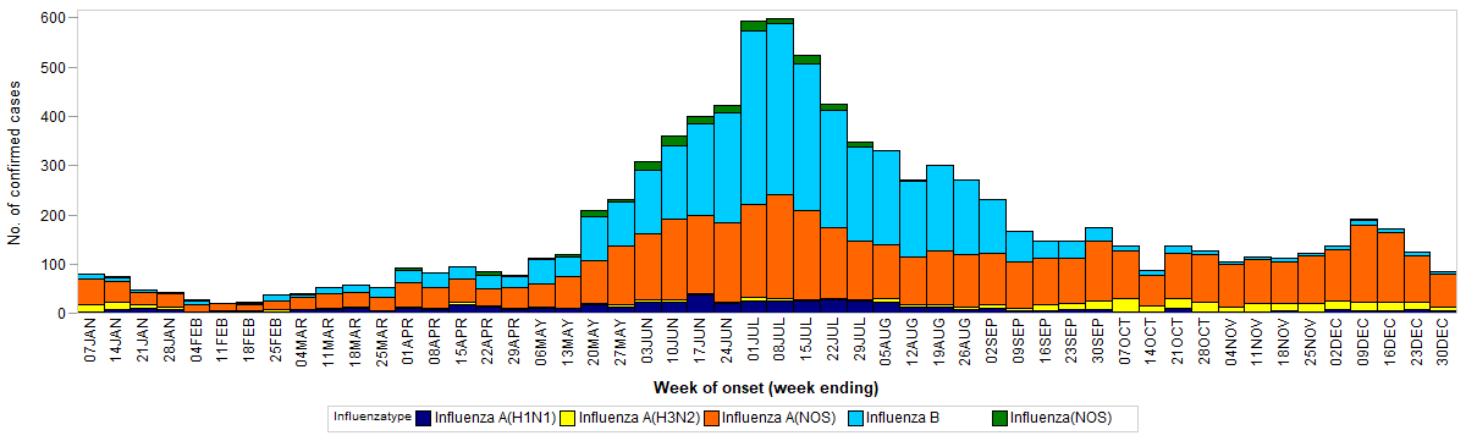
LGA	December count	December rate per 100,000*	2023 count	2023 crude rate per 100,000*
Bayside	101	57.3	1,756	996.4
Georges River	80	52.4	1,470	962.0
Randwick	88	65.1	1,404	1,038.3
Sutherland Shire	161	69.7	2,402	1,039.9
Sydney	47	65.7	586	818.8
Waverley	77	111	955	1,376.1
Woollahra	46	85.3	735	1,363.4
<b>SESLHD</b>	<b>600</b>	<b>67.7</b>	<b>9,308</b>	<b>1047.7</b>

\*based on estimated resident population 2021.

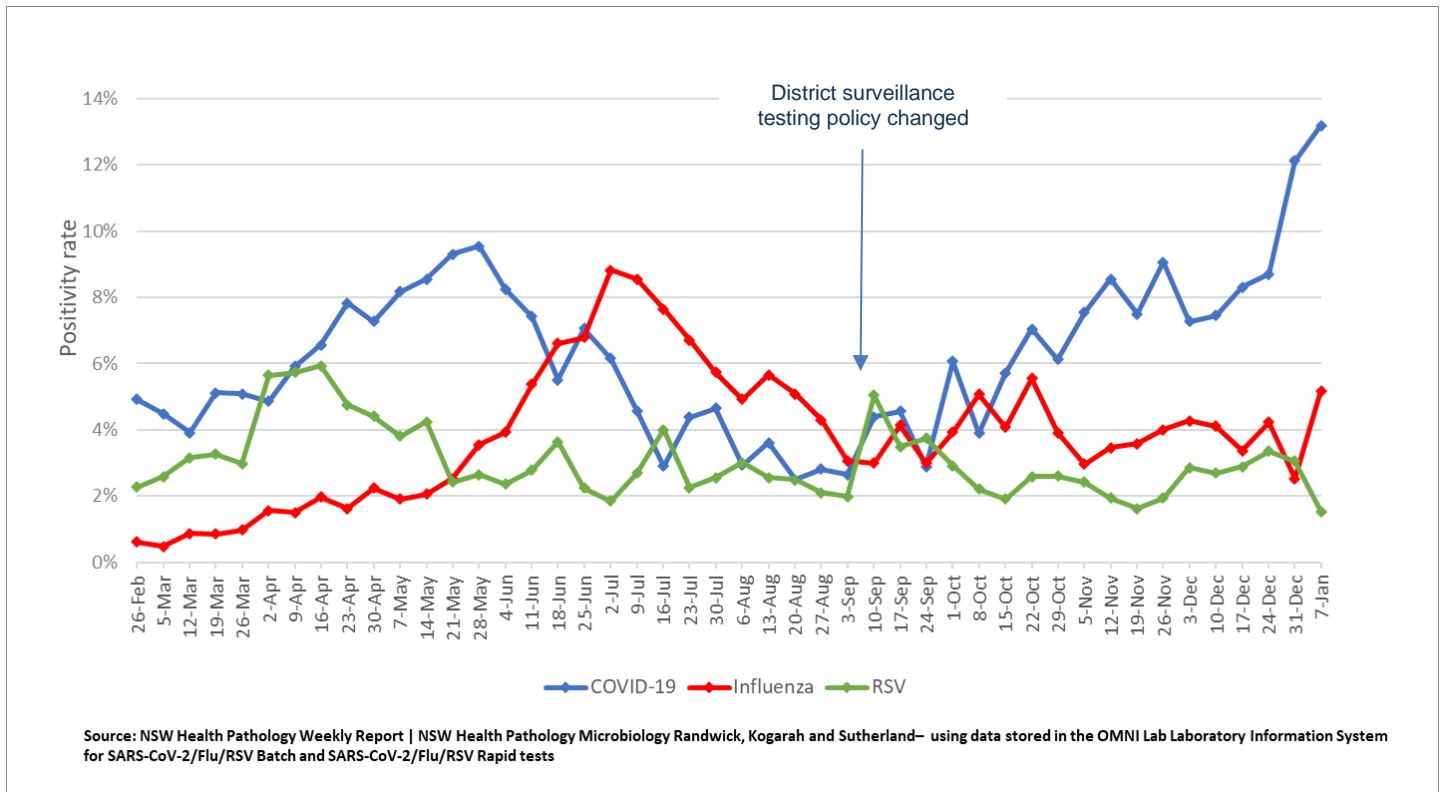
**Figure 1: SESLHD COVID-19 cases by week of notification, 1 January to 30 December 2023**



**Figure 2: SESLHD influenza cases by type and week of notification, 1 January to 30 December 2023**



**Figure 3: SEALS respiratory test positivity rate by week, week ending 7 January 2024**

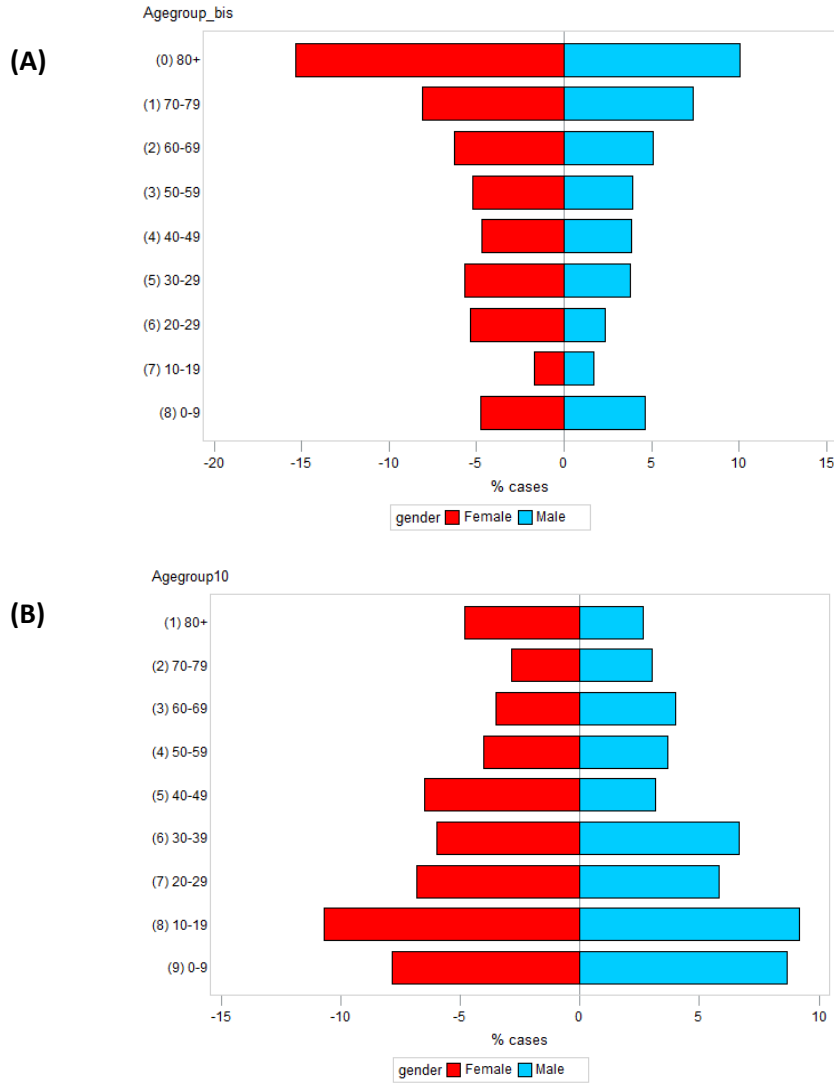


Source: NSW Health Pathology Weekly Report | NSW Health Pathology Microbiology Randwick, Kogarah and Sutherland— using data stored in the OMNI Lab Laboratory Information System for SARS-CoV-2/Flu/RSV Batch and SARS-CoV-2/Flu/RSV Rapid tests

\* SESLHD SARS-CoV-2 PCR positivity is based on SEALS testing data that mainly reflects patients presenting to District hospitals, including SCH.

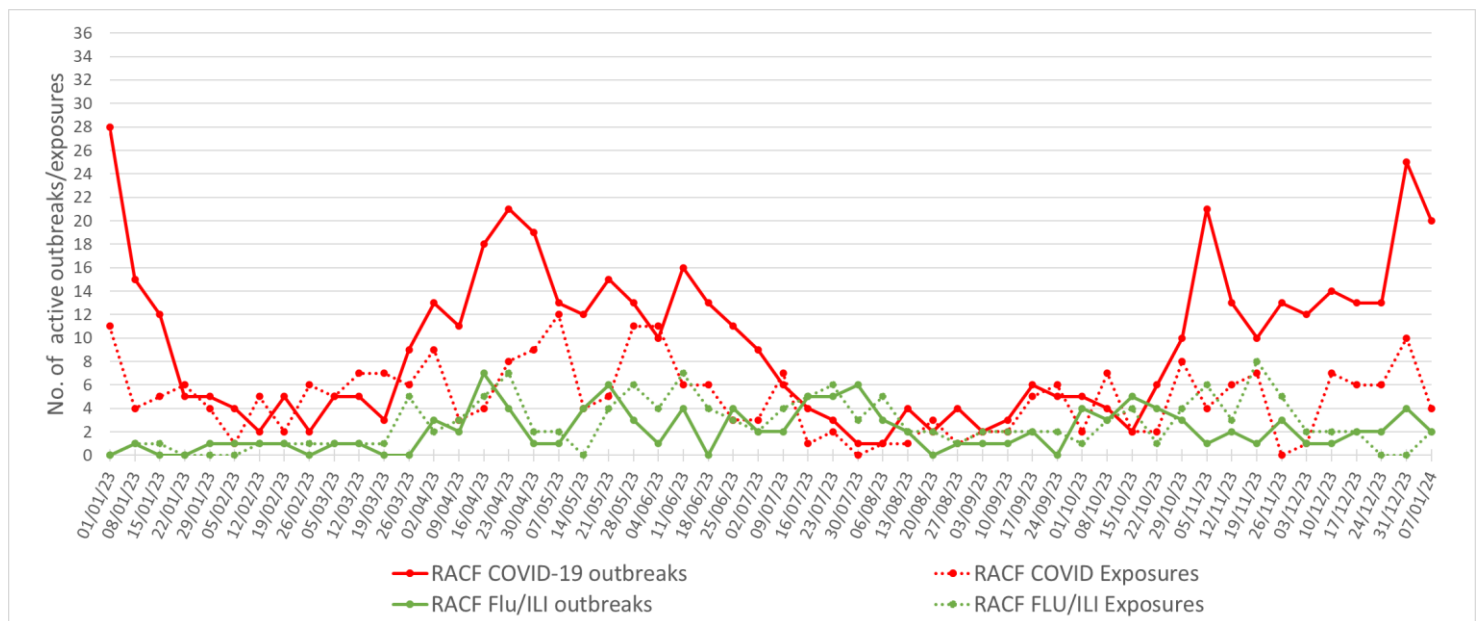
## 2. Demographic Data

Figure 4: Percentage of (A) COVID and (B) influenza cases in the last month by age group and gender, to 31 Dec. 2023



## 3. Residential facility outbreaks reported to the SESLHD Public Health Unit

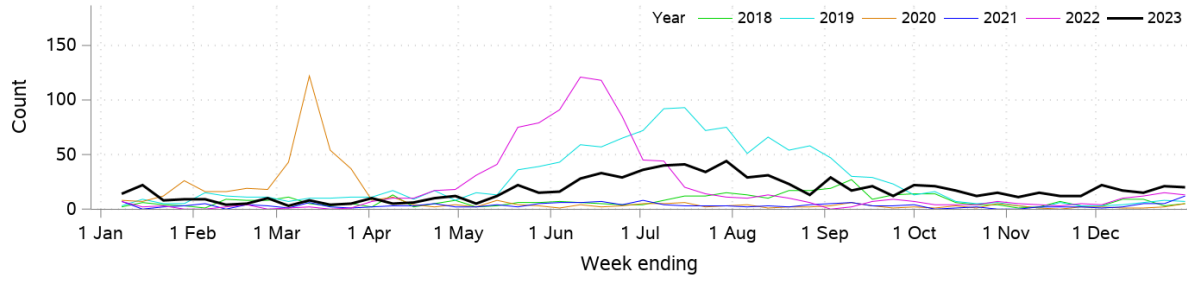
Figure 5: SESLHD aged care facility & disability COVID and Flu/ILI exposures and outbreaks, 01 Jan 2023 to 7 Jan 2024



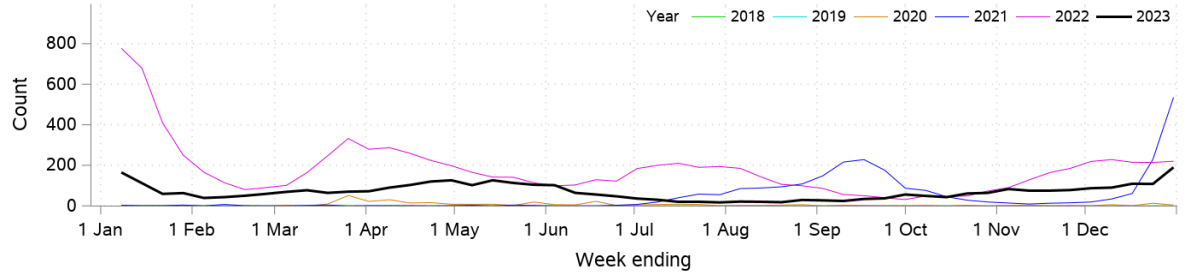
NB. 'Flu/ILI' outbreaks include outbreaks caused by RSV and other respiratory viruses

#### 4. SESLHD emergency department presentations and admissions

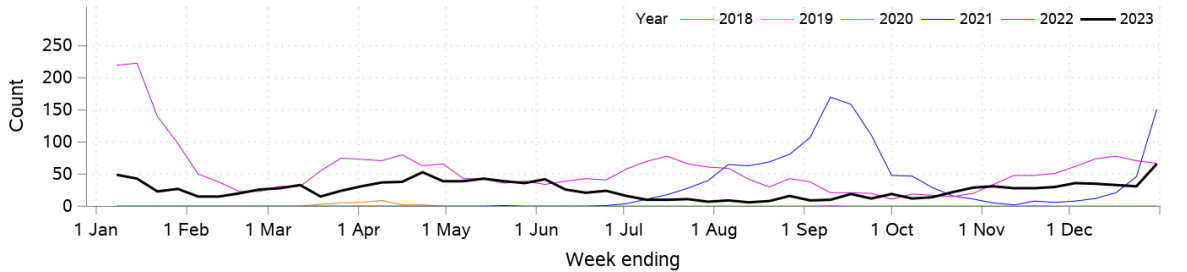
**Figure 6: Presentations to ED due to influenza like illness**



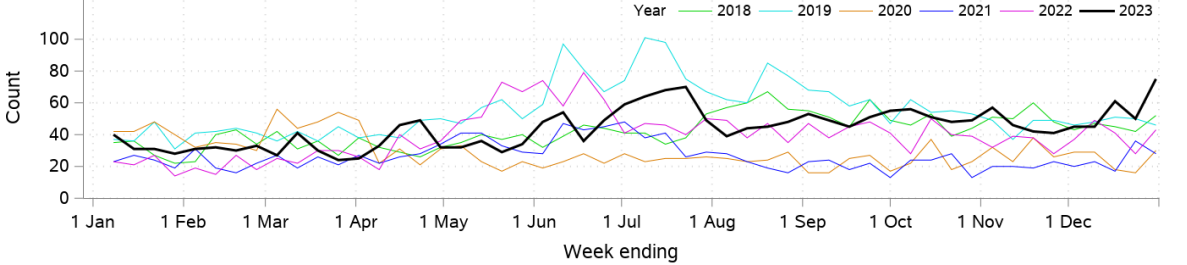
**Figure 7: Presentations to ED due to COVID-19/coronaviruses**



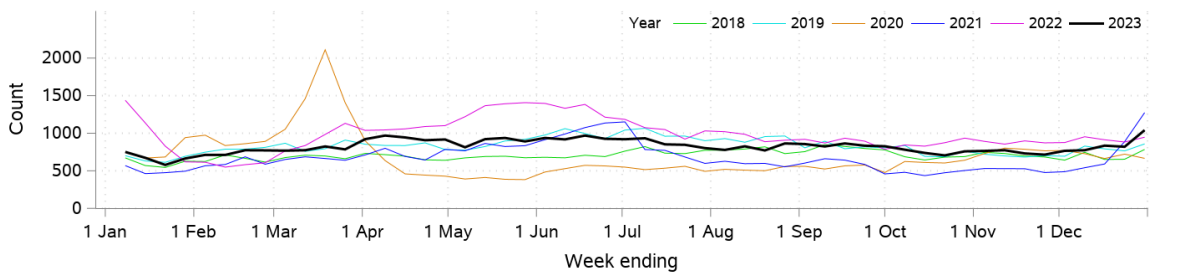
**Figure 8: COVID-19/coronaviruses hospital admissions**



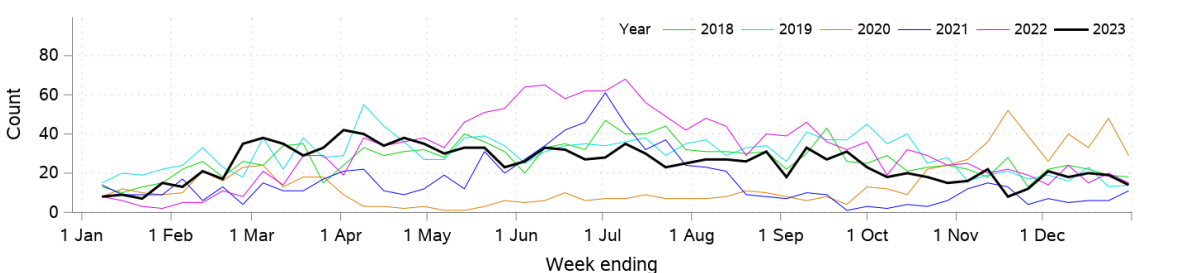
**Figure 9: Pneumonia and ILI hospital admissions**



**Figure 10: Presentations to ED due to respiratory, fever and unspecified infection**



**Figure 11: Presentations to ED due to bronchiolitis**



Data is from NSW Public Health Rapid Emergency Department Surveillance System