



**Key messages for local services**

**COVID-19**

Overall indicators of COVID-19 activity during November were higher than in October, however most indicators appear to have stabilised, suggesting that the wave may have peaked. Laboratory notifications were 59% **higher** than in October, and were predominantly from older age groups. The positivity rate of PCR tests fluctuated from week to week and averaged about 8% compared to 5.7% in October. Aged care outbreaks peaked in early November. Six deaths in SESLHD residents were attributed to COVID-19.

**Influenza**

Influenza notifications continue at similar levels and are predominantly from children under 10 years. Indicators such as ED presentations and admissions for influenza-like illness remain at the top of the usual range, and may include activity of other viruses, such as HMPV, parainfluenza and rhinovirus. Influenza A remains the predominant influenza strain detected. Influenza test positivity increased during November from 3 to 4.3%.

**Respiratory syncytial virus**

RSV positivity initially declined, however increased in the second half of the month. Similarly bronchiolitis presentations increased in the second half of November and are at the top of the pre-pandemic range for this time of year.

**Data summary**

**1. Case numbers**

**Table 1: SESLHD COVID PCR and RAT positive cases by LGA of residence**

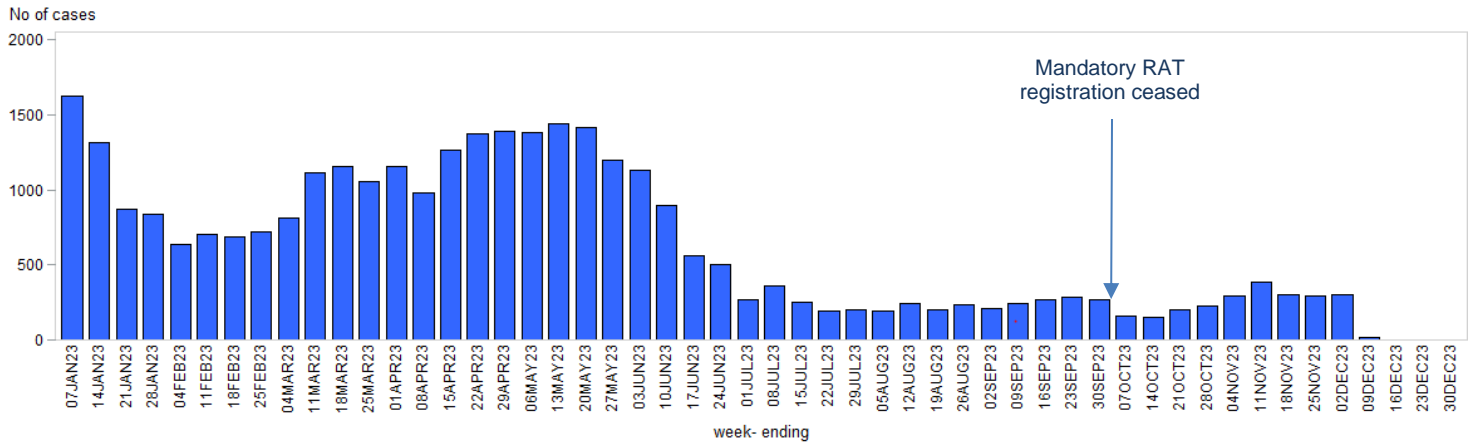
LGA	November count	November rate per 100,000*	2023 count	2023 crude rate per 100,000*
Bayside	283	160.7	6,061	3,442.6
Georges River	238	155.9	5,838	3,823.1
Randwick	223	164.8	5,349	3,954.2
Sutherland Shire	296	128.2	8,748	3,788.6
Sydney	104	145.2	2,307	3,221.3
Waverley	108	155.6	1,883	2,713.7
Woollahra	110	204.1	1,627	3,019.1
<b>SESLHD</b>	<b>1,362</b>	<b>153.1</b>	<b>31,813</b>	<b>3584.5</b>

**Table 2: SESLHD influenza positive cases by LGA of residence and notification week**

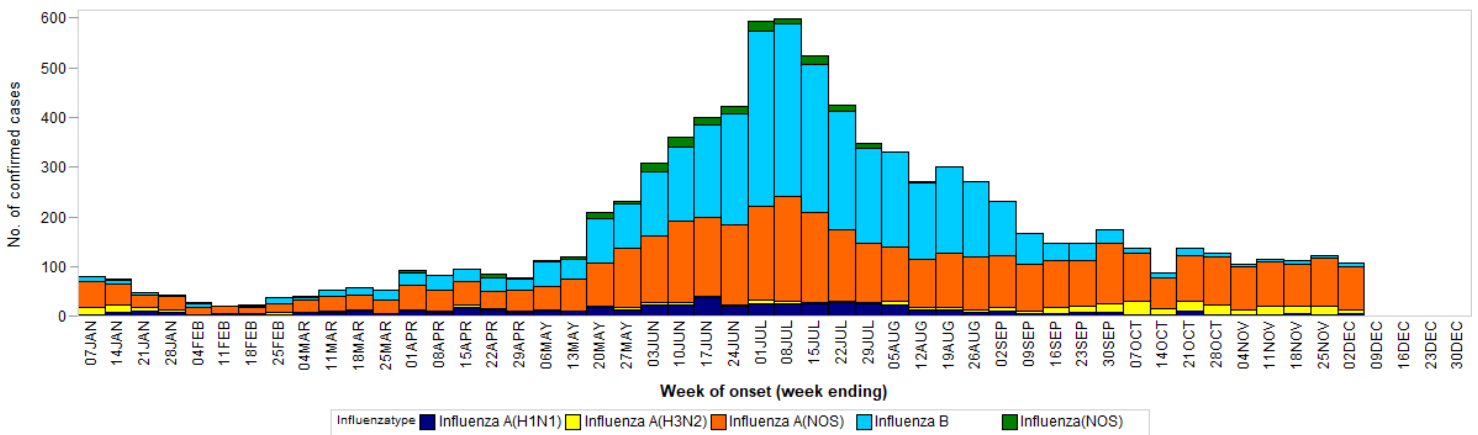
LGA	November count	November rate per 100,000*	2023 count	2023 crude rate per 100,000*
Bayside	112	63.6	1,661	943.4
Georges River	95	62.2	1,396	914.2
Randwick	79	58.4	1,319	975.1
Sutherland Shire	103	44.6	2,251	974.9
Sydney	45	62.9	541	755.4
Waverley	56	80.7	878	1,265.3
Woollahra	30	55.6	693	1,285.9
<b>SESLHD</b>	<b>520</b>	<b>58.4</b>	<b>8,739</b>	<b>983.9</b>

\*based on estimated resident population 2021.

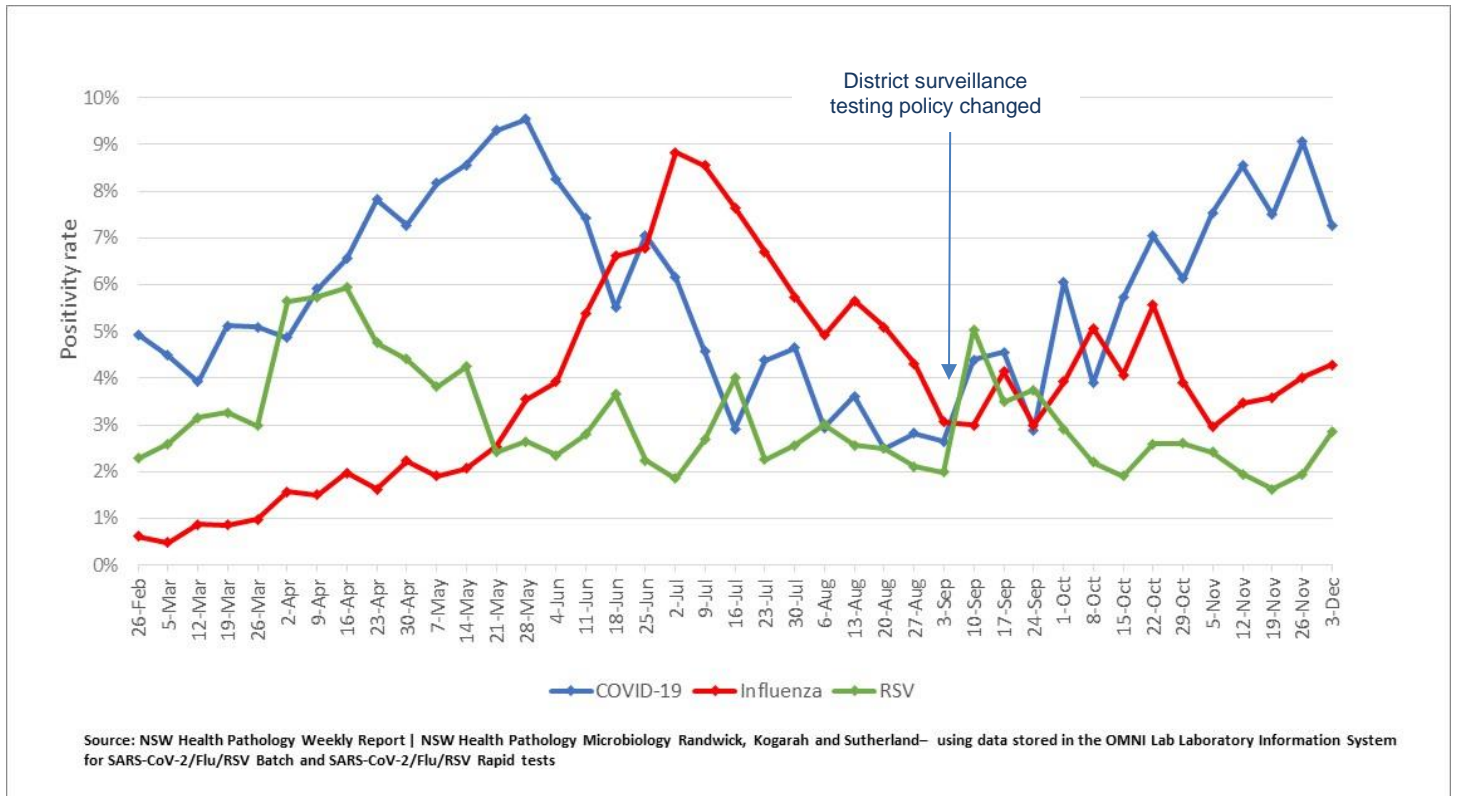
**Figure 1: SESLHD COVID-19 cases by week of notification, 1 January to 2 December 2023**



**Figure 2: SESLHD influenza cases by type and week of notification, 1 January to 2 December 2023**



**Figure 3: SEALS respiratory test positivity rate by week, week ending 3 December 2023**

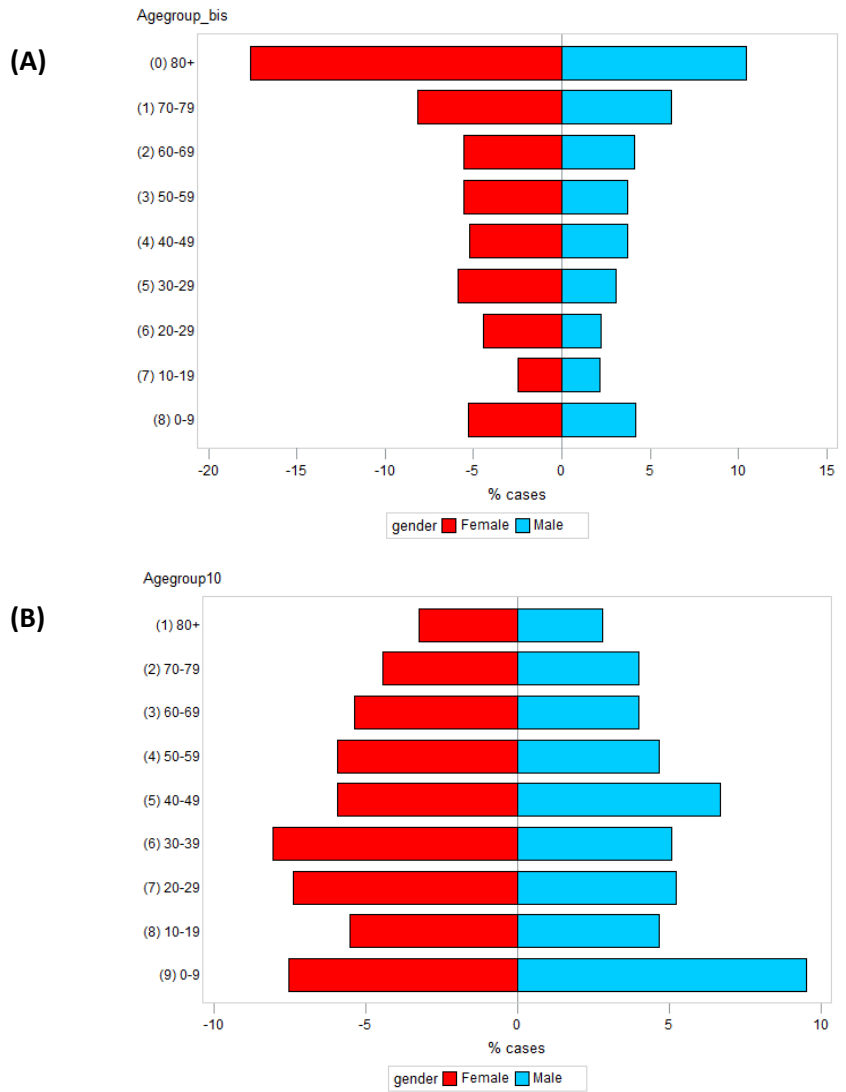


Source: NSW Health Pathology Weekly Report | NSW Health Pathology Microbiology Randwick, Kogarah and Sutherland – using data stored in the OMNI Lab Laboratory Information System for SARS-CoV-2/Flu/RSV Batch and SARS-CoV-2/Flu/RSV Rapid tests

\* SESLHD SARS-CoV-2 PCR positivity is based on SEALS testing data that mainly reflects patients presenting to District hospitals, including SCH.

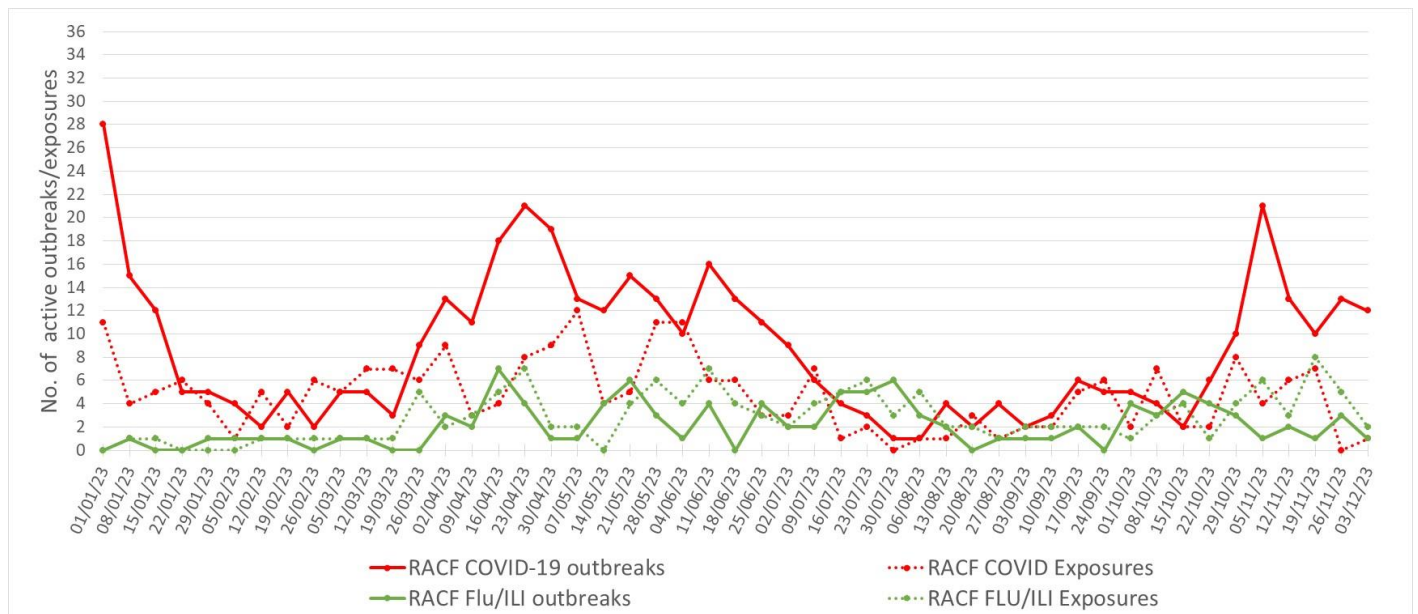
## 2. Demographic Data

Figure 4: Percentage of (A) COVID and (B) influenza cases in the last month by age group and gender, to 30 Nov. 2023



## 3. Residential facility outbreaks reported to the Public Health Unit

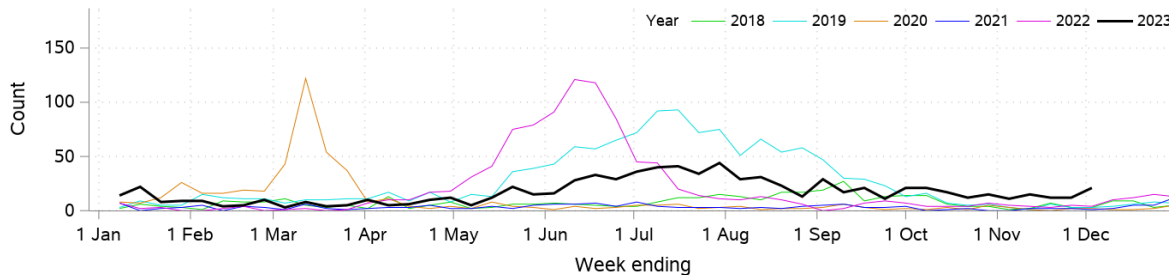
Figure 5: SESLHD aged care facility & disability COVID and Flu/ILI exposures and outbreaks, 01 Jan 2023 to 3 Dec 2023



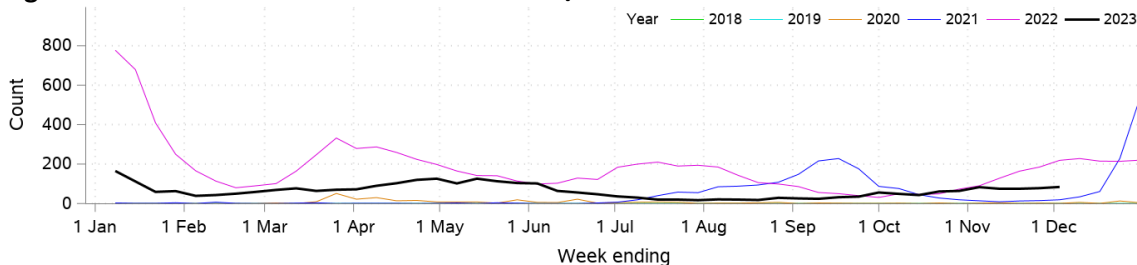
NB. 'Flu/ILI' outbreaks include outbreaks caused by RSV and other respiratory viruses

#### 4. Emergency department presentations and admissions

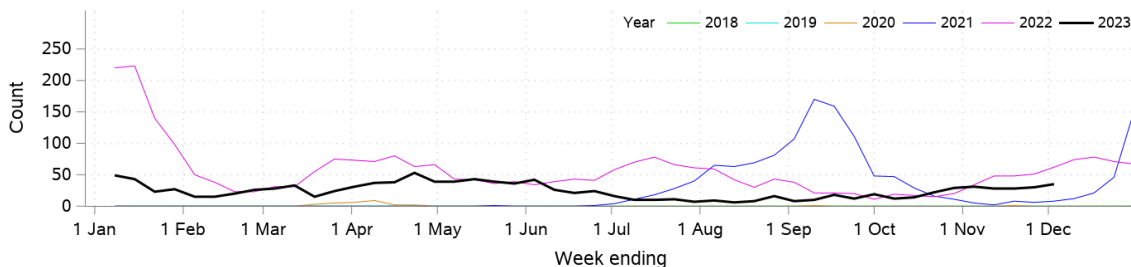
**Figure 6: Presentations to ED due to influenza like illness**



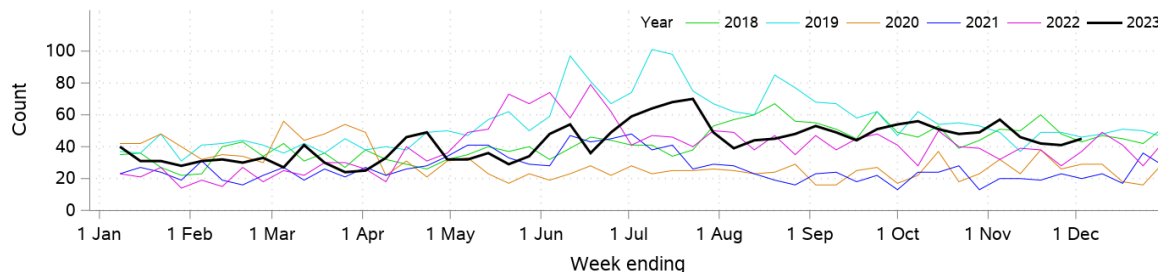
**Figure 7: Presentations to ED due to COVID-19/coronaviruses**



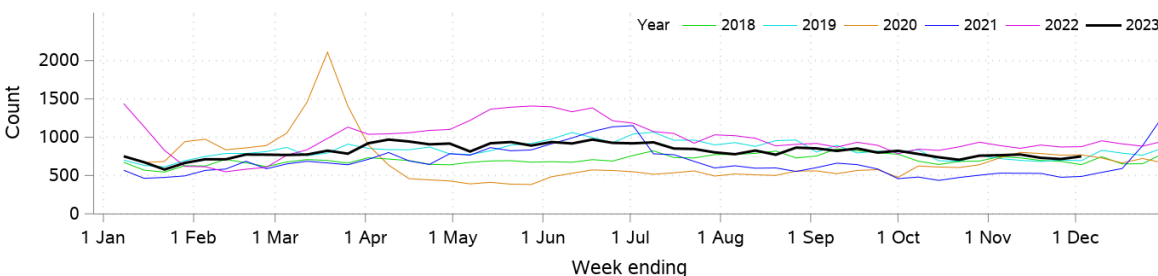
**Figure 8: COVID-19/coronaviruses hospital admissions**



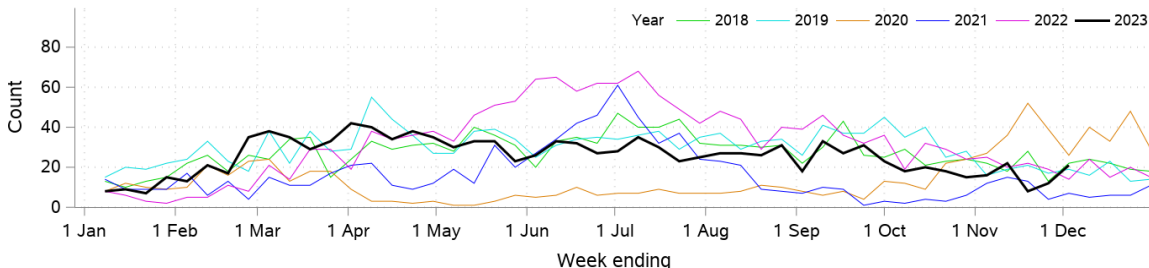
**Figure 9: Pneumonia and ILI hospital admissions**



**Figure 10: Presentations to ED due to respiratory, fever and unspecified infection**



**Figure 11: Presentations to ED due to bronchiolitis**



Data is from NSW Public Health Rapid Emergency Department Surveillance System