



**Key messages for local services**

**COVID-19**

Overall indicators of COVID-19 activity during October **increased**, particularly aged care outbreaks, ED attendances and admissions. Thirteen deaths in SESLHD residents were attributed to COVID-19. Laboratory notifications were 23% lower than in September, however since October 1 patients are no longer required to register positive RATs in the ServiceNSW portal. The positivity rate of PCR tests increased, however this cannot be compared to previous periods as testing is now more targeted due to changes in the District COVID-19 surveillance testing policy at the end of August.

**Influenza**

Influenza notifications **decreased** by 40% but indicators such as ED presentations and admissions for influenza-like illness remain at the top of the usual range, and may include activity of other viruses, such as HMPV, parainfluenza and rhinovirus. Influenza A remains the predominant influenza strain detected.

**Respiratory syncytial virus**

RSV continues at similar levels and bronchiolitis presentations are within the expected range for this time of year.

**Data summary**

**1. Case numbers**

**Table 1: SESLHD COVID PCR and RAT positive cases by LGA of residence**

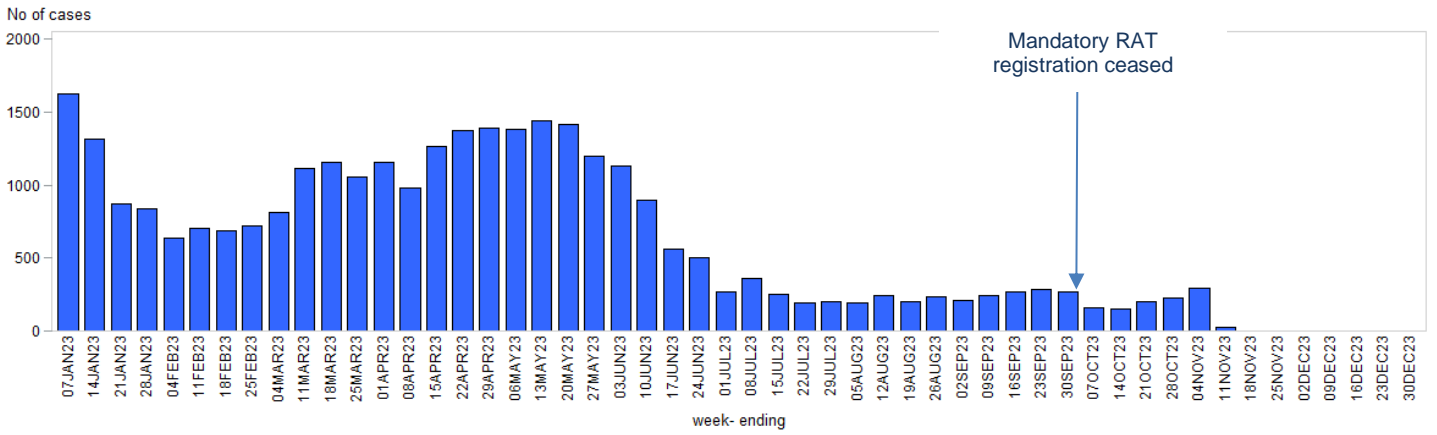
| LGA              | October count | October rate per 100,000* | 2023 count    | 2023 crude rate per 100,000* |
|------------------|---------------|---------------------------|---------------|------------------------------|
| Bayside          | 153           | 86.9                      | 5,796         | 3,292.0                      |
| Georges River    | 154           | 100.8                     | 5,614         | 3,676.4                      |
| Randwick         | 132           | 97.6                      | 5,128         | 3,790.8                      |
| Sutherland Shire | 186           | 80.6                      | 8,477         | 3,671.2                      |
| Sydney           | 62            | 86.6                      | 2,207         | 3,081.7                      |
| Waverley         | 77            | 111.0                     | 1,785         | 2,572.5                      |
| Woollahra        | 91            | 168.9                     | 1,528         | 2,835.4                      |
| <b>SESLHD</b>    | <b>855</b>    | <b>96.4</b>               | <b>30,535</b> | <b>3440.9</b>                |

**Table 2: SESLHD influenza positive cases by LGA of residence and notification week**

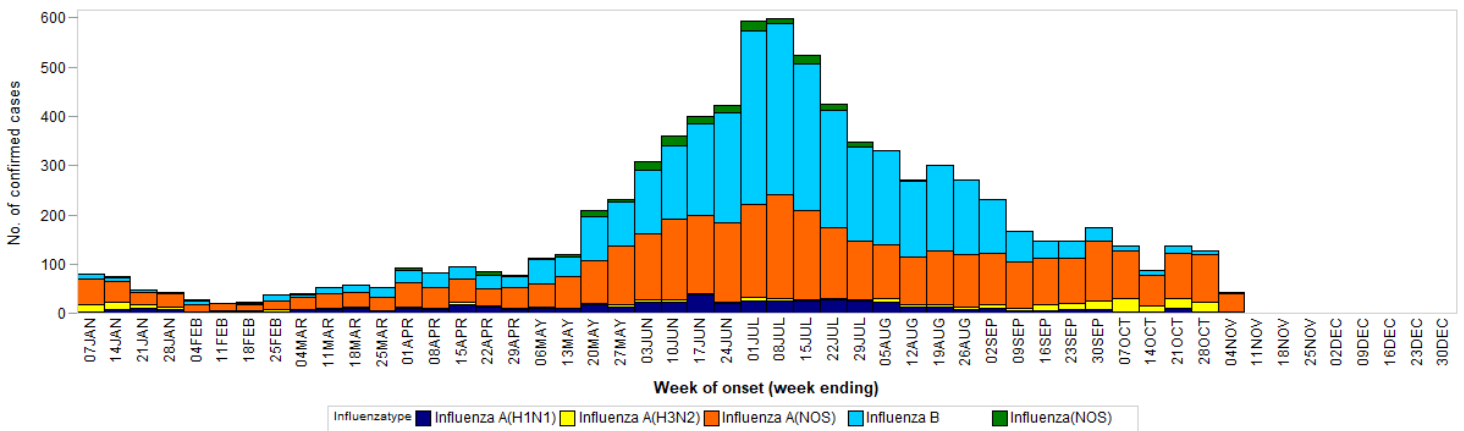
| LGA              | October count | October rate per 100,000* | 2023 count   | 2023 crude rate per 100,000* |
|------------------|---------------|---------------------------|--------------|------------------------------|
| Bayside          | 130           | 73.8                      | 1,556        | 883.8                        |
| Georges River    | 78            | 51.0                      | 1,303        | 853.3                        |
| Randwick         | 85            | 62.9                      | 1,248        | 922.6                        |
| Sutherland Shire | 103           | 44.6                      | 2,151        | 931.6                        |
| Sydney           | 44            | 61.5                      | 506          | 706.5                        |
| Waverley         | 57            | 82.1                      | 826          | 1190.4                       |
| Woollahra        | 31            | 57.5                      | 663          | 1230.3                       |
| <b>SESLHD</b>    | <b>528</b>    | <b>59.4</b>               | <b>8,253</b> | <b>929.3</b>                 |

\*based on estimated resident population 2021.

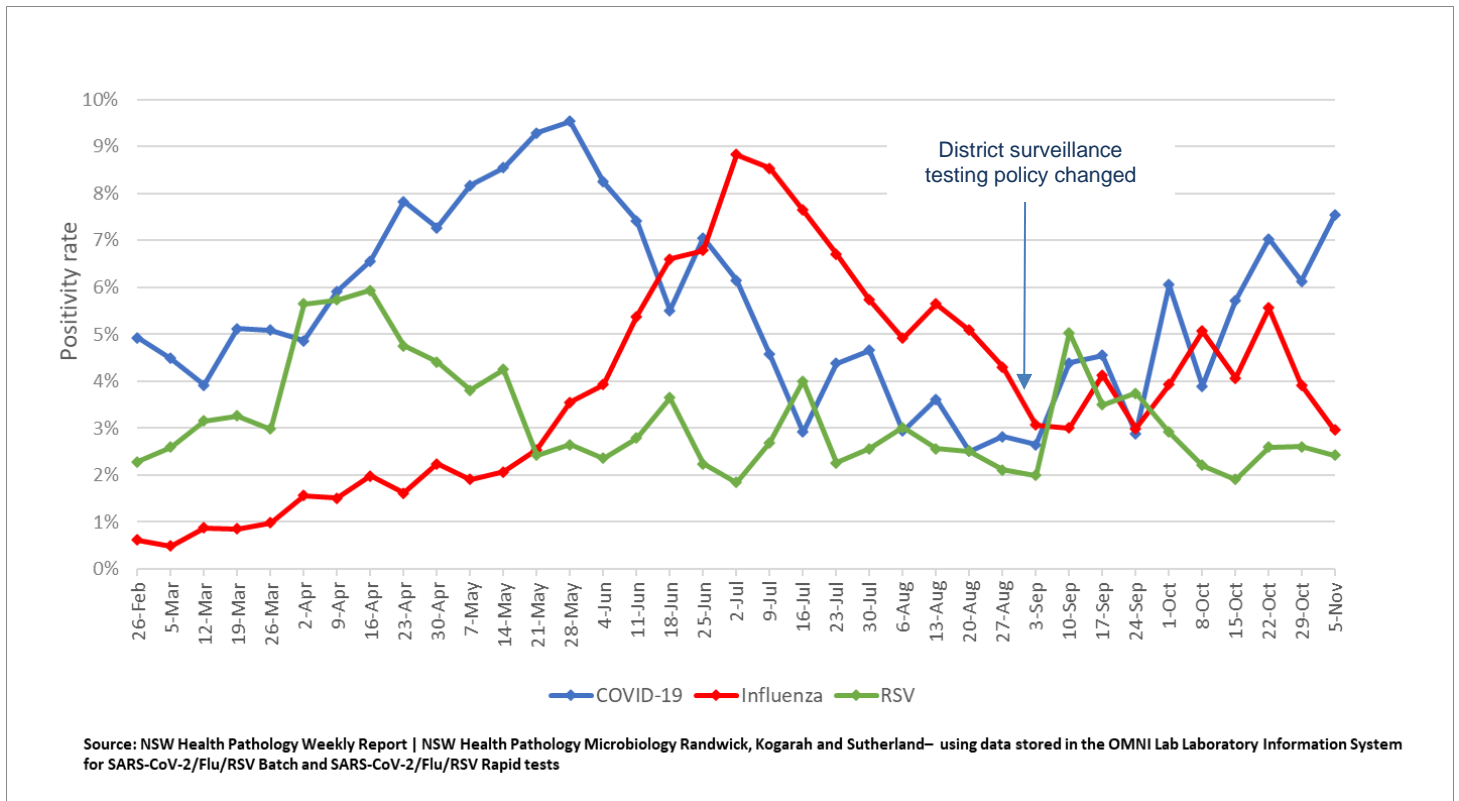
**Figure 1: SESLHD COVID-19 cases by week of notification, 1 January to 4 November 2023**



**Figure 2: SESLHD influenza cases by type and week of notification, 1 January to 4 November 2023**



**Figure 3: SEALS respiratory test positivity rate by week, week ending 5 November 2023**

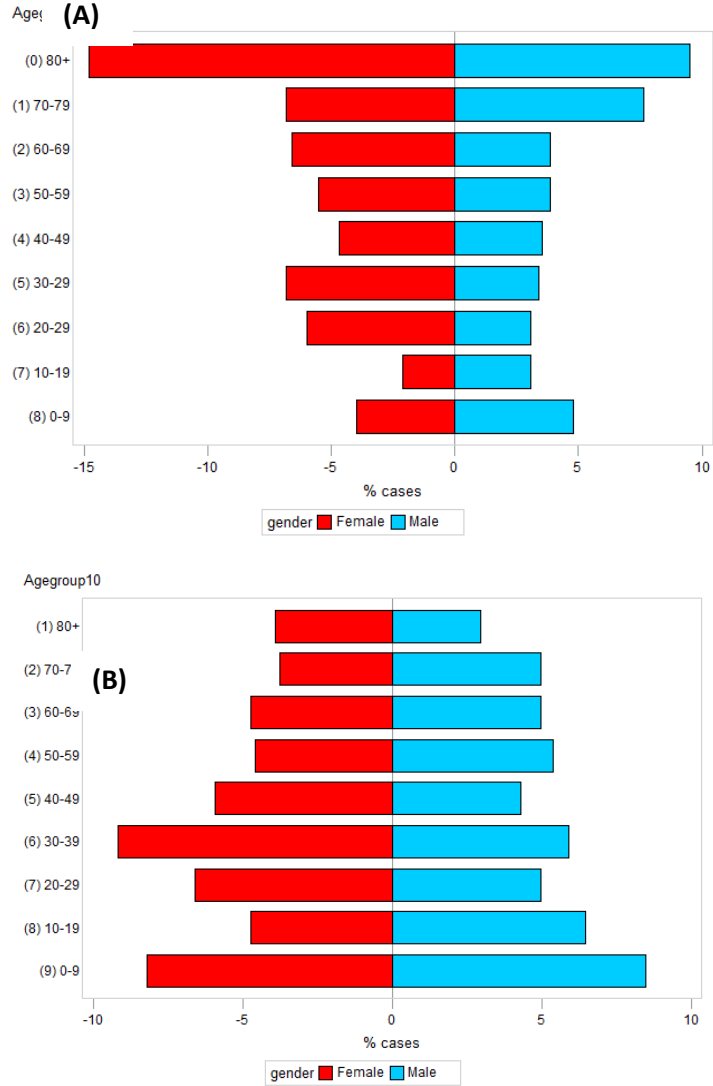


Source: NSW Health Pathology Weekly Report | NSW Health Pathology Microbiology Randwick, Kogarah and Sutherland– using data stored in the OMNI Lab Laboratory Information System for SARS-CoV-2/Flu/RSV Batch and SARS-CoV-2/Flu/RSV Rapid tests

\* SESLHD SARS-CoV-2 PCR positivity is based on SEALS testing data that mainly reflects patients presenting to District hospitals, including SCH.

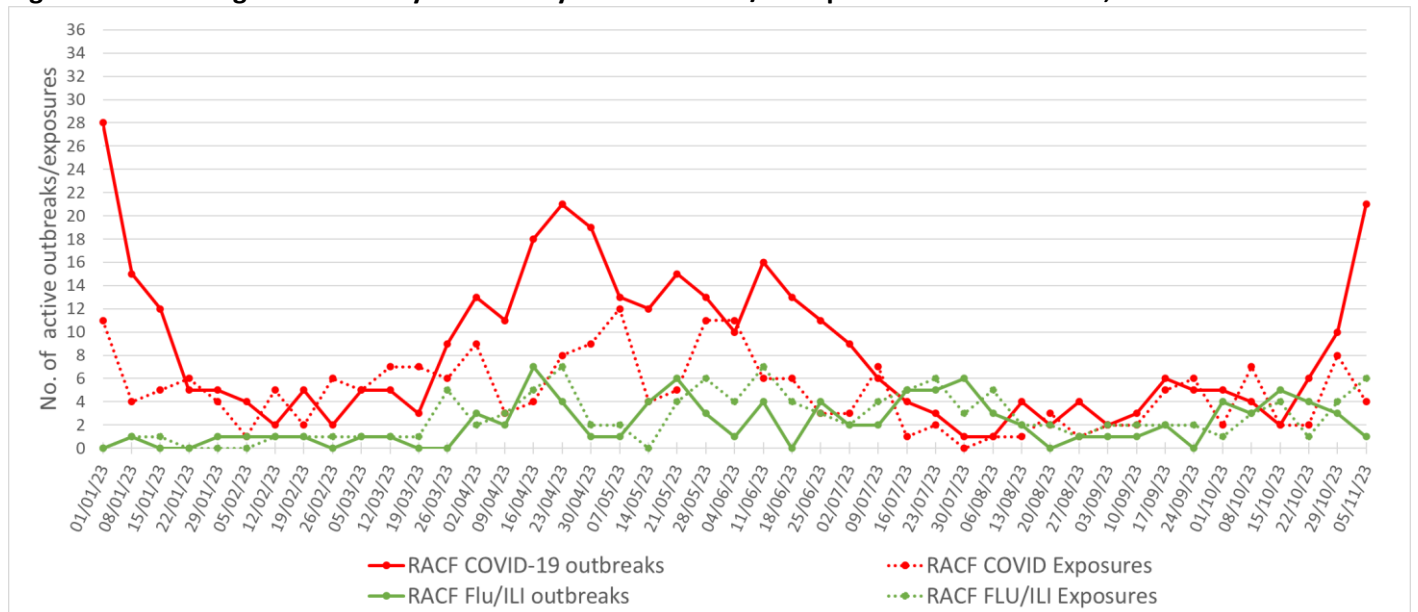
## 2. Demographic Data

Figure 4: Percentage of (A) COVID and (B) influenza cases in the last month by age group and gender, to 31 Oct. 2023



## 3. Residential facility outbreaks reported to the Public Health Unit

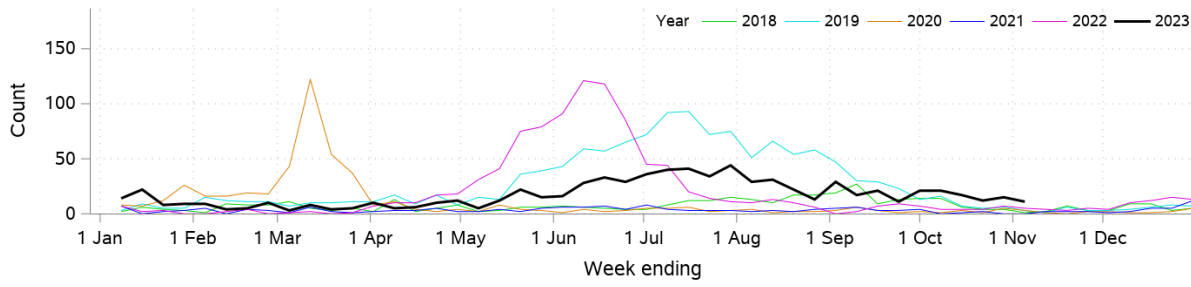
Figure 5: SESLHD aged care facility & disability COVID and Flu/ILI exposures and outbreaks, 01 Jan 2023 to 5 Nov 2023



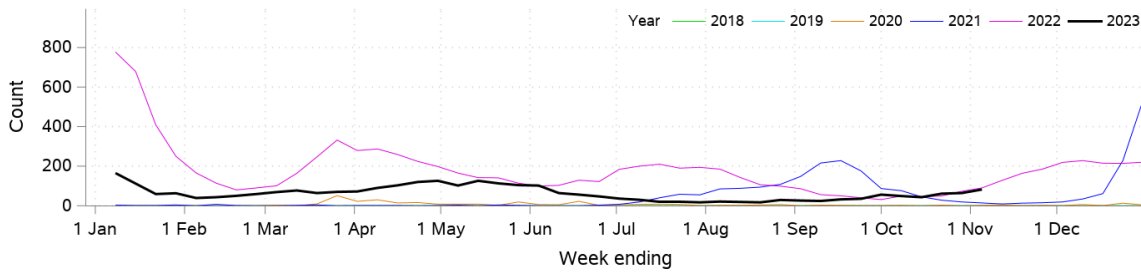
NB. 'Flu/ILI' outbreaks include outbreaks caused by RSV and other respiratory viruses

#### 4. Emergency department presentations and admissions

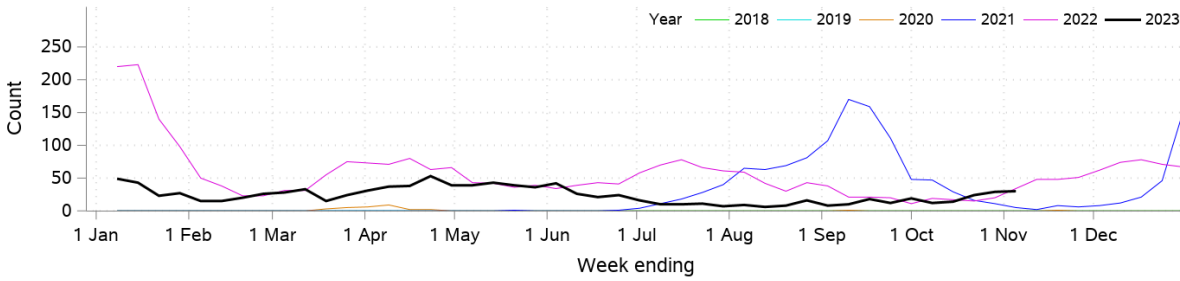
**Figure 6: Presentations to ED due to influenza like illness**



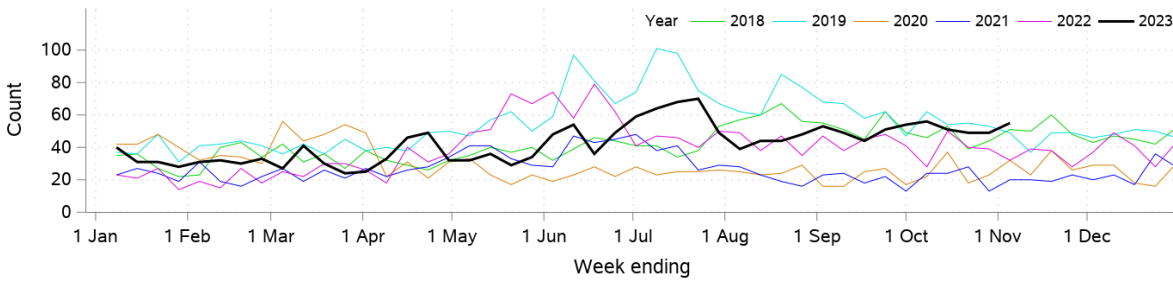
**Figure 7: Presentations to ED due to COVID-19/coronaviruses**



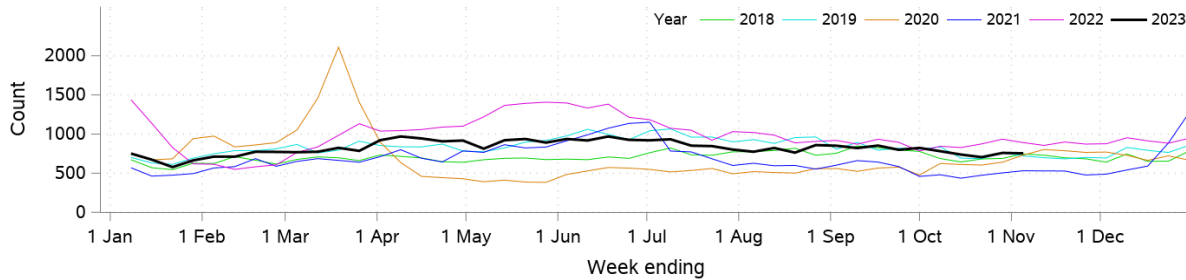
**Figure 8: COVID-19/coronaviruses hospital admissions**



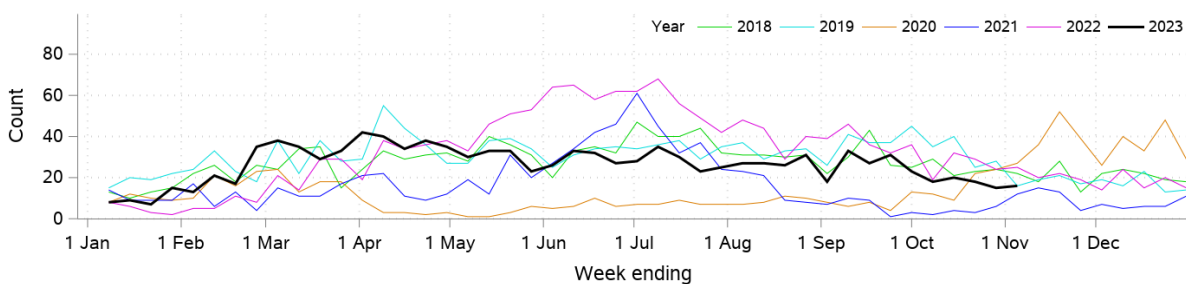
**Figure 9: Pneumonia and ILI hospital admissions**



**Figure 10: Presentations to ED due to respiratory, fever and unspecified infection**



**Figure 11: Presentations to ED due to bronchiolitis**



Data is from NSW Public Health Rapid Emergency Department Surveillance System