

Breaking ground to build a better tomorrow.

Welcome to the August edition of the St George Hospital Redevelopment – Stage 3 update.

In this newsletter, we're excited to share the progress we've made in transforming our hospital to better serve our community. Read on to learn about the latest developments and upcoming changes.

The Stage 3 Redevelopment project is a significant endeavour aimed at enhancing patient care, expanding facilities, and embracing the latest medical technologies. With a focus on creating a more comfortable and advanced healthcare environment, we're dedicated to improving the well-being of our patients and their families.



Celebrating the new CT Angio Operating Theatre

A ribbon cutting ceremony of the new St George Hospital Angio CT Interventional Radiology Suite took place on Monday 26th June.

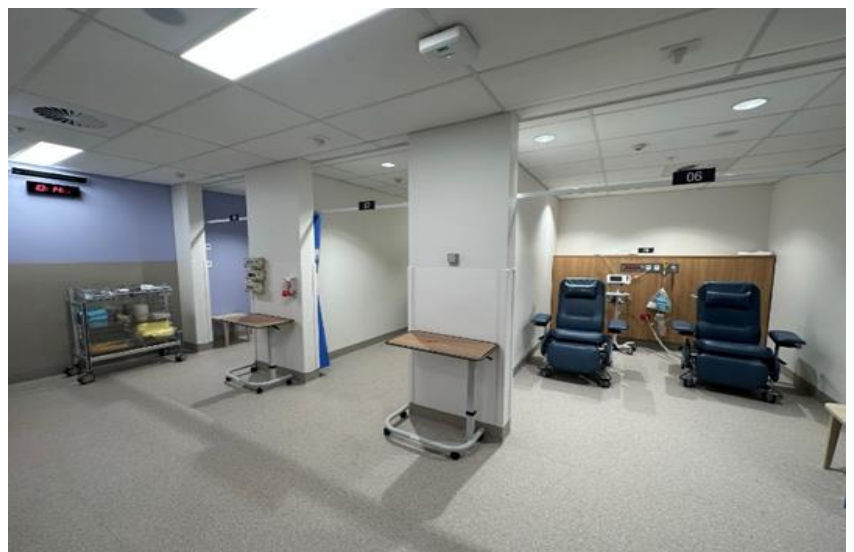
This world class precinct had international and local guests from Strasbourg, Singapore, Japan, and Australia alongside our amazing medical and clinical teams.



The Power of Nuclear Medicine

Exciting news: We have introduced the latest edition, state-of-the-art PET scanner to our Nuclear Medicine department. The new PET scanner has gone live this month and promises to be a game-changer for our medical facility. With its advanced features and exceptional imaging capabilities, we are well-positioned to deliver enhanced accuracy and improved patient outcomes.

The expansion of our services through this new PET scanner as well as an upgrade of our existing Gen 1 scanner will allow us to accommodate a greater number of patients, reducing waiting times and ensuring that everyone receives the timely and high-quality care they deserve.



Main Works: Project scope refresh

The project scope is split into three core work packages:

1. Construction of new Ambulatory Care Building including connections into the existing building
2. Demolition of the Prince William Wing and construction of new landscape forecourt
3. Refurbishment of various sections of the existing buildings on campus for clinical & non-clinical service



Laying the groundwork

Bulk excavation is well underway, which involves the removal of large amounts of soil, rock and other material from site to prepare for construction.

Piling works has also commenced, creating a safe and stable foundation for the new building.

